

Installation and User Guide

**Kamstrup pit antenna with plug
for flowIQ® 2250/3250**

- 6697-902 2 m cable
- 6697-903 7.5 m cable



Content

General information	3
Antenna connection	4
Pit installation for antenna 6697-902/903	5
Drilling template 1:1	8

Kamstrup's pit antenna is used for increasing the radio range to ensure optimal data transfer.

Read this guide and follow the guidelines as illustrated, and you will get the best benefit from your installation.

General information

This pit antenna fits the Kamstrup flowIQ® 2250 and flowIQ® 3250 water meters with plug antenna connection.

The antenna is only for pit installations and comes in two versions:

Antenna type 6697-902 2 m cable dual-band (460-915 MHz)
 6697-903 7.5 m cable dual-band (460-915 MHz)

Only four holes need to be drilled in the lid, and a 1:1 drilling template can be found on the last page of this guide.

Both antennas come with screws, plugs and seal housing no.: 3026-892.

Installation overview

The antenna is connected directly to the antenna plug on the meter.

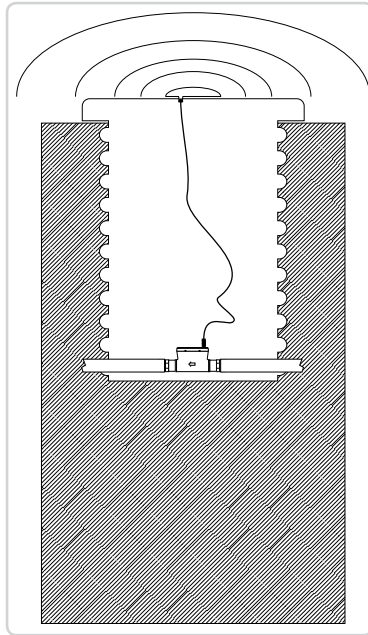


Figure 1

Antenna connection

Remove the helix antenna if this is mounted.

Break the sealing housing with a small screwdriver, see figure 2.

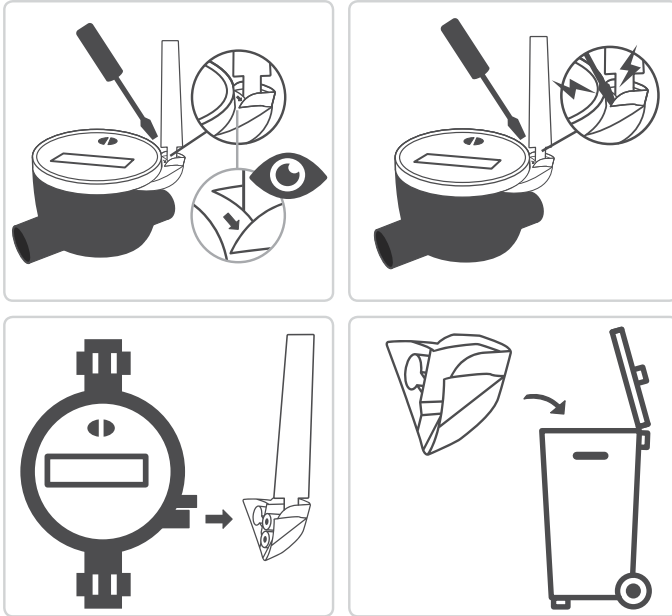


Figure 2

Connect the cable to the antenna plug connection, and press a new sealing housing on to lock the antenna cable, see figure 3. Both connections **MUST** be completely clean.

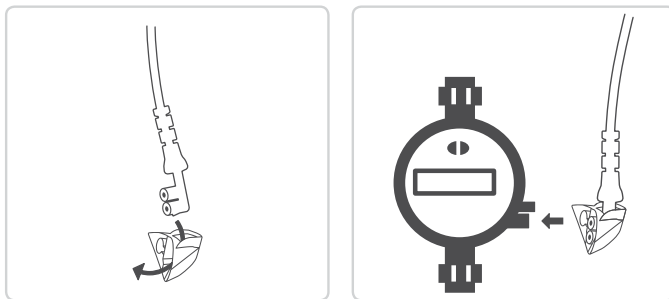


Figure 3

Pit installation for antenna 6697-902/903

The antenna must be placed on a pit-lid that is strong enough to minimize dereflection under heavy load. It is important to mount the antenna on a flat surface to obtain the greatest mechanical strength, see figure 4.

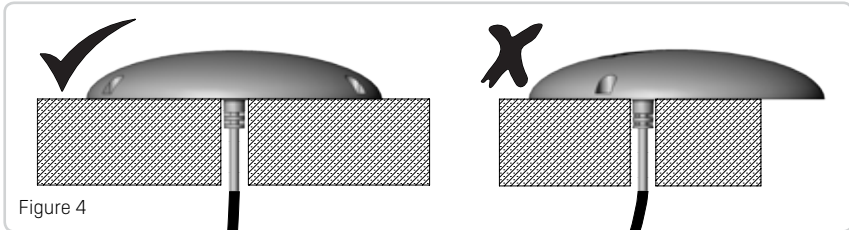


Figure 4

The antenna is to be mounted with 3 included screws to the pit-lid, see figure 5. 3 Hex screws + anchors and 3 Hex bolt UNC 10-24 X $\frac{3}{4}$ " are included. Maximum torque of 4 Nm \pm 10 %.

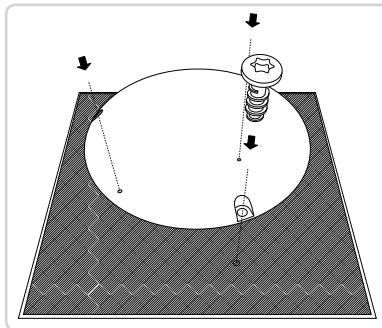


Figure 5

The antenna can be installed in driveways for automobile traffic only, see figure 6.

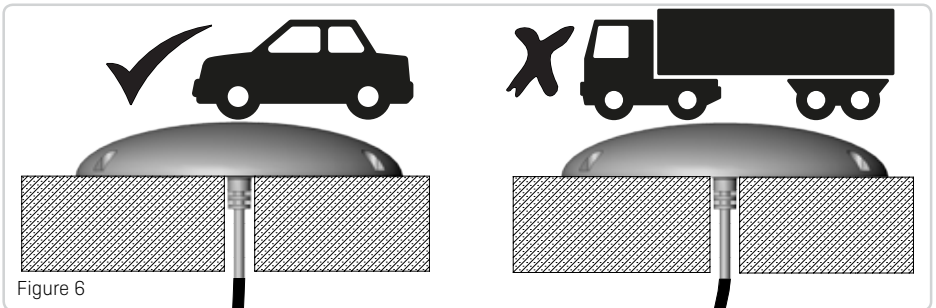
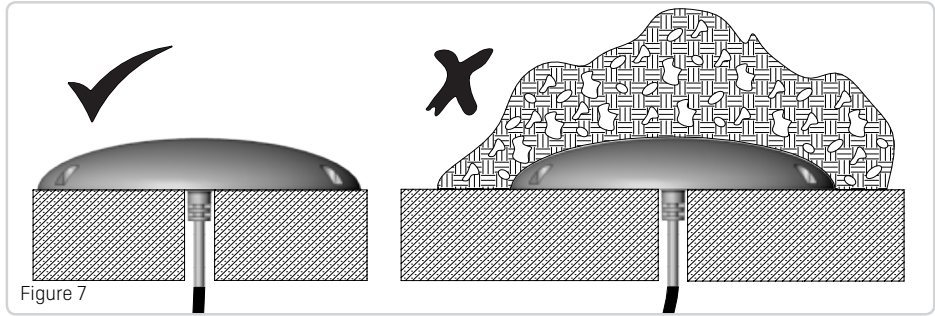


Figure 6

Kamstrup external antenna

To ensure the signal strength it must be free of obstacles. This means that the antenna must not be covered by soil, water, leaves, vehicles, snow or other, see figure 7. An outdoor sealants can be used, to prevent water penetrating through the antenna/lid.



During installation, it must be ensured that there is enough cable in order to lift the cover away securely, without pulling the cable.

Make sure that you have the correct length of cable.

- Avoid mounting near electric cable
- Avoid tight bend or squeeze of the antenna cable
- Never install the antenna in a corner or near metal or metal pipes

