

## Display user guide for Kamstrup OMNIPOWER CT electricity meter

### Basic 1 – Display configuration 600

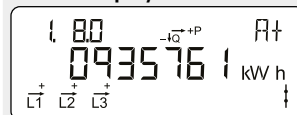
**OBIS code**  
Identification number.

**Phase indication**  
L1 flashes when there is voltage on the phase.  
The arrow indicates the present current direction.

**Optical infrared eye**  
For reading and programming data.

**SO diode**  
Flashes 10,000 times per kWh.  
The display changes via the button – the change takes place upon button release.  
Approx. 2 minutes after the last button press, the display changes automatically to the view 1.8.0 – accumulated electricity consumption in kWh.

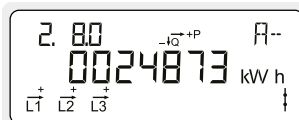
#### Normal display



#### Accumulated active positive energy

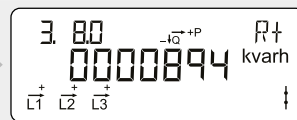
Total electricity consumption from the electricity grid.  
Measured in kilowatt hours [kWh].

2



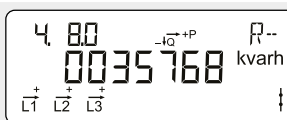
#### Accumulated active negative energy

Total electricity production for the electricity grid.  
Measured in kilowatt hours [kWh].



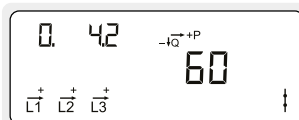
#### Accumulated reactive positive energy

Total reactive electricity consumption from the electricity grid.  
Measured in kilovolt ampere reactive hours [kvarh].



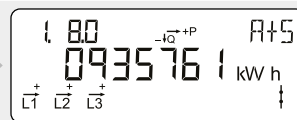
#### Accumulated reactive negative energy

Total reactive electricity production for the electricity grid.  
Measured in kilovolt ampere reactive hours [kvarh].



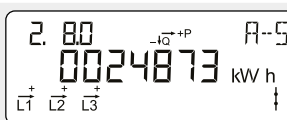
#### Transformer ratio

Transformer ratio for current transformers.



#### Accumulated secondary active positive energy

Total secondary electricity consumption from the electricity grid.  
Measured in kilowatt hours [kWh].



#### Accumulated secondary active negative energy

Total secondary electricity production for the electricity grid.  
Measured in kilowatt hours [kWh].

2

