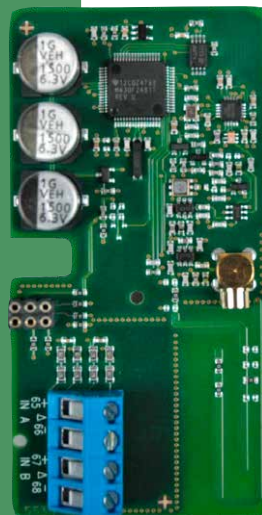


Data sheet

Wireless M-Bus module T1 OMS – short transmission interval

- Designed in accordance with the OMS specifications
- Up to 11 years of battery lifetime
- Stable and fast reading
- Free-of-charge European frequency
- Standardised radio protocol
- Internal antenna and connection for external antenna



MEMBER



Open Metering System

www.oms-group.org

Application

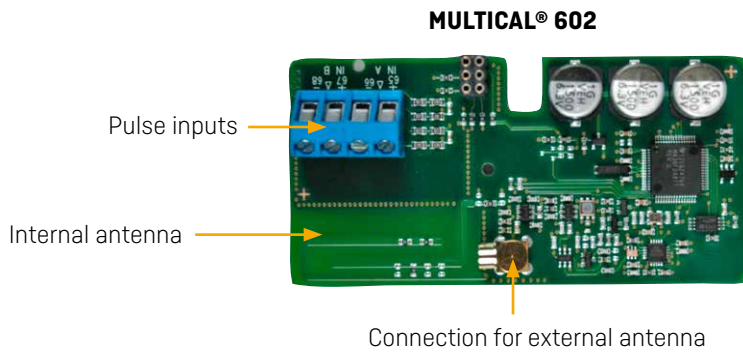
The wireless M-Bus module is designed to be an integrated part of Open Metering Systems (OMS), and can be used in Kamstrup's heat, cooling and combined heat/cooling meter MULTICAL® 602.

The module detects the meter type in which it is installed and is ready for communication according to the OMS specifications.

The first package is sent at a random time between 20 seconds and 13 minutes after commissioning (OMS installation telegram).

The data telegram is created on the basis of the meter type (heat, cooling, combined heat/cooling or volume) and is sent out in the network automatically every 16 seconds.

Module



Technical data

Frequency

868.95 MHz
(EU free-of-charge area 868-870 MHz)

Communication

Wireless M-Bus, T-mode, one-way communication

OMS specifications

Volume 2: Primary Communication Version 4.0.2

Transmission interval

Every 16 seconds

Transmission power

10 mW

Battery lifetime

- MULTICAL® 602: 11 years

Range

- Internal antenna: Up to 200 m
- External antenna: Up to 500 m

Update interval (data)

Every 2 minutes

Mechanical data

Dimensions (L x W x D)

90 x 44 x 16 mm [MULTICAL® 602]

Temperature area

-40 °C...+ 70 °C

Markings

R&TTE EN300 220 – Class 2
 EN301 489

CE marked

Data telegram

| Heat meter | Cooling meter | Combined heat/cooling meter | Volume meter |
|------------------------|------------------------|-----------------------------|------------------------|
| Energy E1 | Energy E3 | Energy E1 | Volume V1 |
| Volume V1 | Volume V1 | Energy E3 | Info |
| Info | Info | Volume V1 | Flow |
| Flow | Flow | Info | Temp. inlet - T1 |
| Temp. inlet - T1 | Temp. inlet - T1 | Flow | Date |
| Temp. outlet - T2 | Temp. outlet - T2 | Temp. inlet - T1 | Hour counter |
| Power | Power | Temp. outlet - T2 | Logging date |
| Date | Date | Power | Monthly data Volume V1 |
| Hour counter | Hour counter | Date | Monthly data Peak flow |
| Logging date | Logging date | Hour counter | |
| Monthly data Energy E1 | Monthly data Energy E3 | Logging date | |
| Monthly data Volume V1 | Monthly data Volume V1 | Monthly data Energy E1 | |
| Monthly data Peak flow | Monthly data Peak flow | Monthly data Energy E3 | |
| | | Monthly data Volume V1 | |
| | | Monthly data Peak flow | |

Ordering data

Description

T1 OMS, MULTICAL® 602

External antenna, mini Triangle antenna, 2.5 m cable

Type no.

60200**36**00000000

6699-448

Kamstrup A/S

Industrivej 28, Stilling

DK-8660 Skanderborg

T: +45 89 93 10 00

F: +45 89 93 10 01

info@kamstrup.com

kamstrup.com