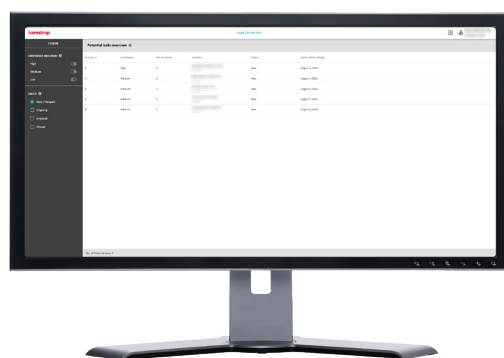

Analytics for smart water metering

- Browser based platform for analyzing data
- Intuitive dashboards and detailed overview of the distribution network
- Get a continuous overview of your water loss and potential leaks
- Find leaks in service connections

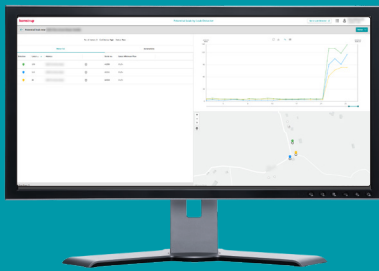


Your analytics toolkit

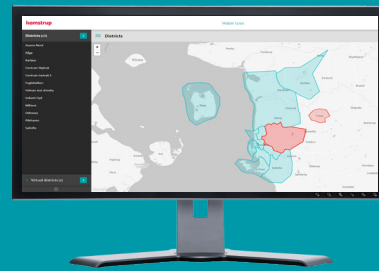
The value of your smart meter data goes far beyond accurate billing. With the right tools, you can transform your data into actionable insights. Water Intelligence is our analytics platform for smart water metering, and with it you can go from imagining “What if” to knowing “How to”.

Water Intelligence is a browser-based platform that gives you the knowledge needed to effectively target your efforts. Your meter data is automatically organized, visualized and analyzed to give you a total overview of the water loss in your distribution network as well as any high-risk service connections or distribution mains with possible leaks.

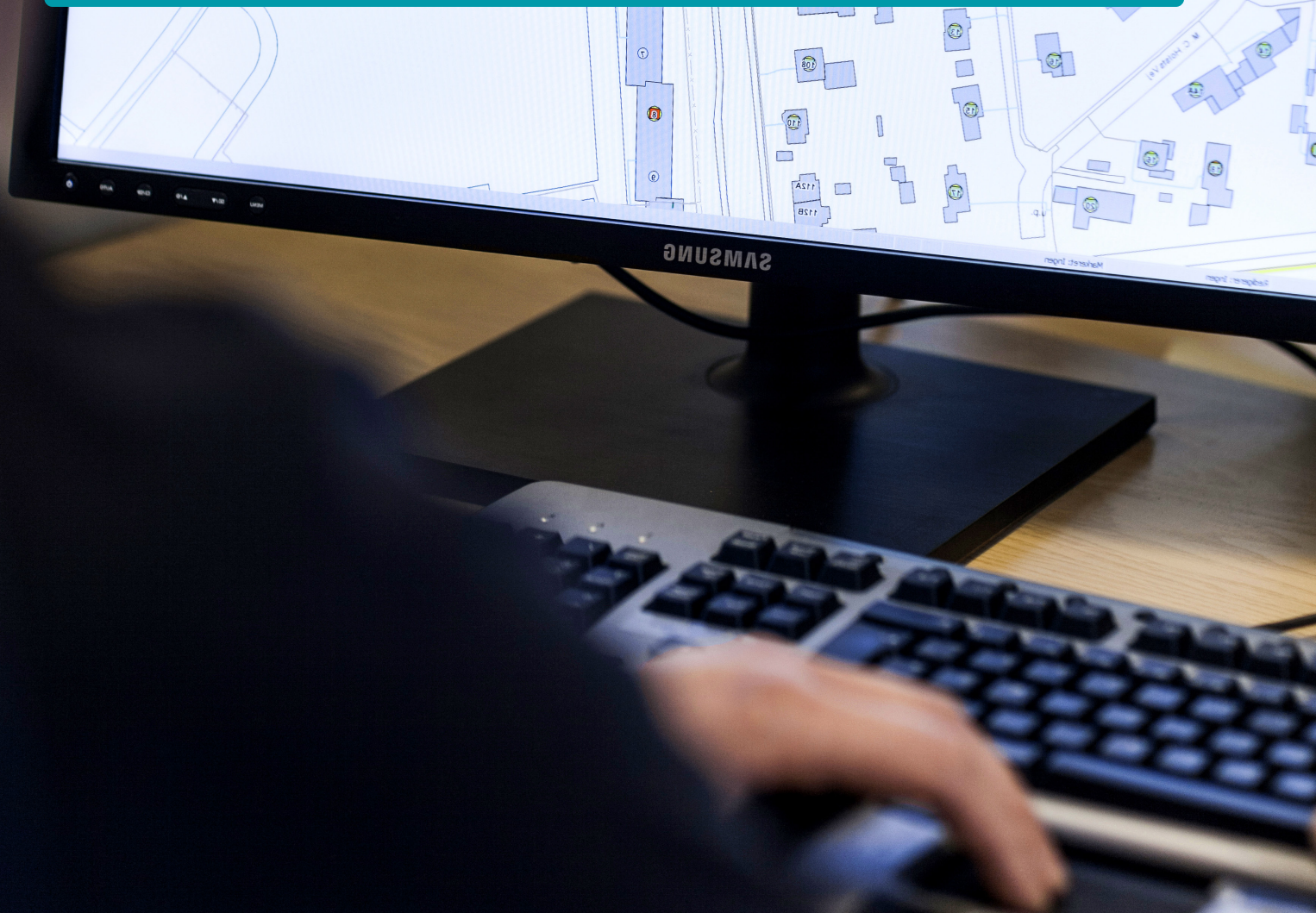
Modules in Water Intelligence



Leak Detector assist you to locate potential leaks in service connections and distribution mains



District Analyser gives you a continuous overview of the water loss in your individual districts

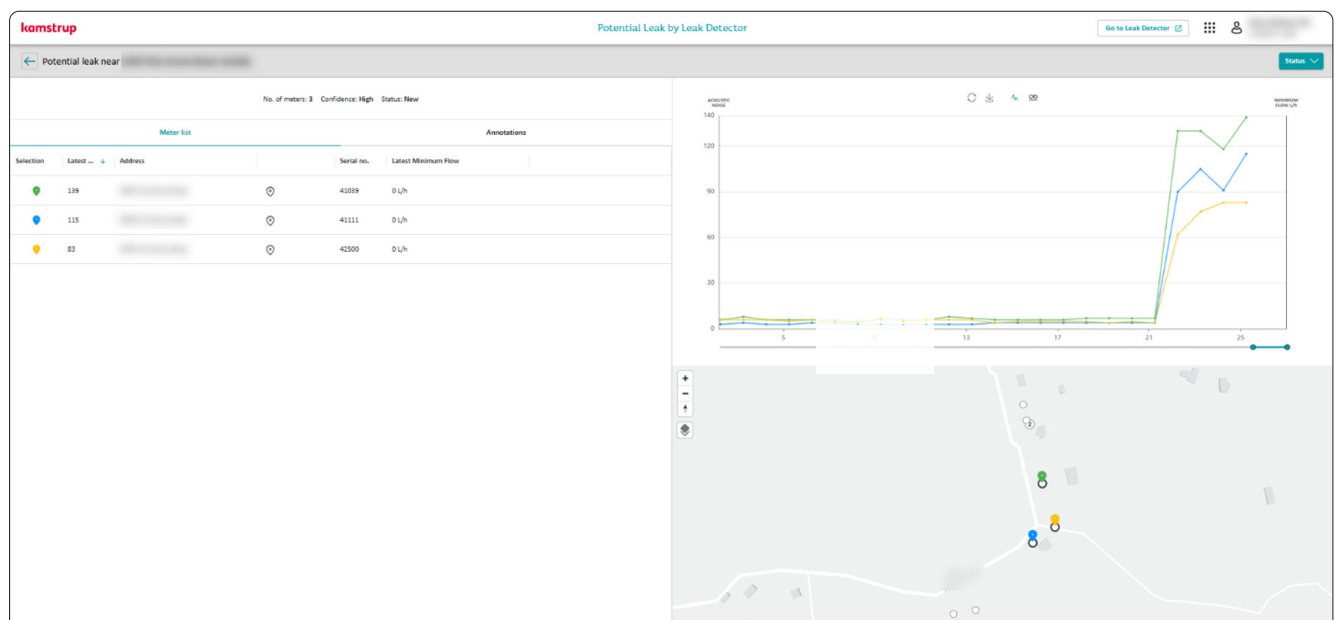


Leak Detector

Leak detection is often a time-consuming, inefficient and expensive task based on a combination of trial and error, theoretical models or gut feelings. But it does not have to be.

Leak Detector enables you to identify leaks in service connections and distribution mains by analyzing acoustic noise captured by flowIQ® 2200 and/or 3200 water meters. Using advanced algorithms, the system monitors noise patterns and flow to detect anomalies and assess the likelihood of leaks. Potential Leaks identifies meters in the nearby area with similar noise curves. Each potential leak is evaluated daily and ranked by confidence levels and are prioritized allowing you to focus on the most critical cases. By highlighting sudden changes in flow and noise, the system helps prioritize high-risk installations—making leak detection faster, smarter, and more efficient.

With a faster and more efficient leak detection, you reduce your cost per identified leak and can find the low-hanging fruits for reducing your non-revenue water. Detailed knowledge about high-risk installations with possible leaks and the overall condition of your network will also enable you to prioritize your daily efforts to when and where they will have the biggest impact.



Potential leaks

Identifies locations with risk of leakage based on noise patterns. A potential leak can consist of one or more meters. If a meter is in close proximity, they are grouped in a single potential leak. Compare noise curves and view locations on the map.

Intuitive filtering

The filtering options let you control which meters are shown on the Potential Leaks Overview. Filter based on the probability of leak potential with the confidence indicator and see potential leaks in different statuses.

Map-based overview

The map in Leak Detector shows a group of meters with potential leaks in the nearby area with color coding for each meter. It is also possible to have your pipe network integrated into the map.

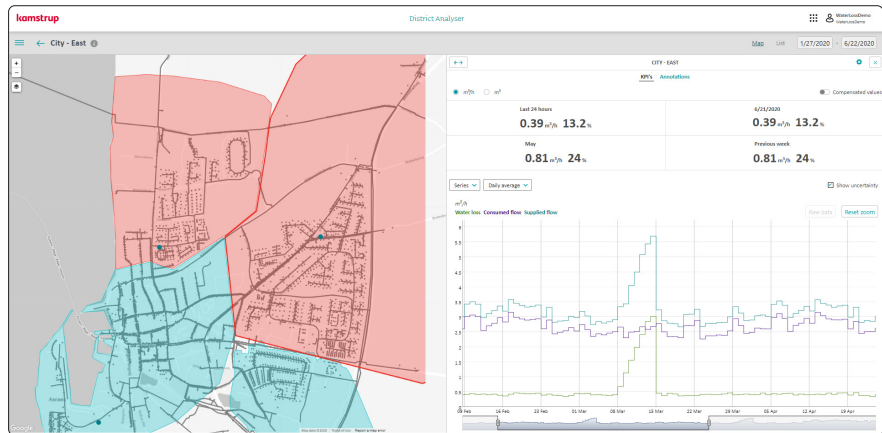
Meters of interest (Mol)

Leak Detector automatically identifies meters with the highest risk of leakage and marks them as Mol's. Mol shows individual meters with leakage risk. Potential Leaks bundles Mol's if in close proximity and similar noise patterns.

District Analyser

District Analyser gives you a complete overview of the water loss in your distribution network split into districts. You get a map-based overview of your entire supply area split into districts, with information on the current water loss and intuitive color coding that shows the status in each of your districts based on predefined limits.

For each district, you get detailed information on inlet flow, consumption, night flow and water loss letting you follow developments closely, target your efforts and act as soon as the water loss increases in one district.



Water loss visualised by district

A map of your supply area provides a constant overview of the water loss in your entire network.

Intuitive color coding of your districts immediately shows their status based on your predefined limits for acceptable water loss.

Insight into each individual district

For each of your districts, you can dive into a detailed view of the water loss, supplied volume, consumed volume and night flow.

Choose and switch between views based on data from the last 24 hours, the last 7 days, the last month or specify the exact period.

Follow the development

You can set up KPI's to track how the water loss in a given district develops to quickly get an overview if something is turning for the worse.

KPI's can be defined for each individual district and for the entire distribution network.

Add background info

Adding annotations can assist you in keeping track of events that happen in your distribution network and that can't necessarily be explained based on your data without additional details.

This could be a sudden spike in water loss that was caused by a fire.

Kamstrup A/S

Industrivej 28, Stilling
DK-8660 Skanderborg
T: +45 89 93 10 00
info@kamstrup.com
kamstrup.com