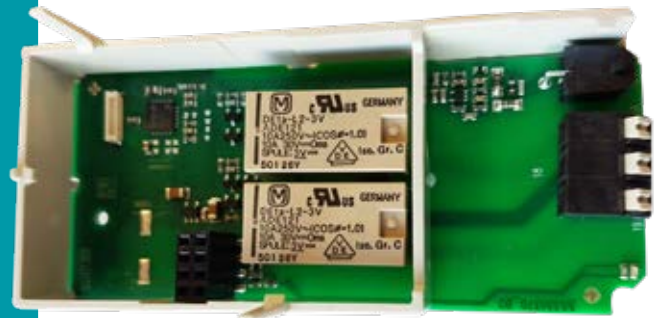
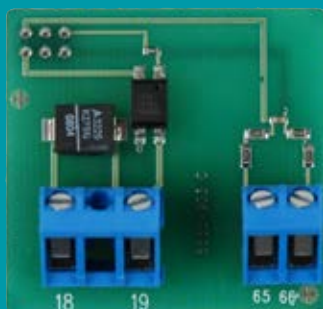
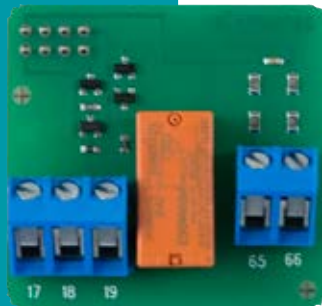


Data sheet

Load control modules

- Switches 230 V load on and off
- Configurable pulse input
- Easy mounting in electricity meter
- No reverification



Application

The load control modules are used for switching load on and off.

Via the electricity meter configuration, the module's load control can be synchronised e.g. with the meter's tariff switch function. The configuration of the meter determines the function of the load control output.

For electricity meters from generation L and forward, each relay has its own Load Control Plan. This controls the load control function enabling it to work independently from the tariff register of the meter.

The 5A load control module also has an input terminal, which enables the reception of pulses from e.g. other meters.

The pulse input offers the possibility of collecting pulses from other meters, e.g. a water meter with potential-free output.

The module is easily connected to the plug in the electricity meter's module area or as add-on module for the GSM8i module.

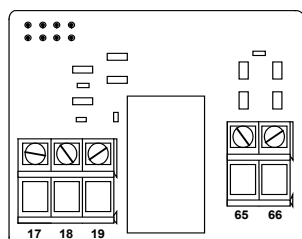
The module can be mounted or replaced without reverification of the meter.

Data load control modules

Type number	6850058	6850069	6845005	6850086
Technical data				
Supply	Internally via the electricity meter			
Power consumption < 0.008 W < 0.2 W	< 0.2 W			
Terminals 0.15 mm ² - 2 mm ²	0.15 mm ² - 2 mm ²			
Recommended cable cross section	0.5 mm ²			
Operating temperature	- 40 °C - + 70 °C			
Mekaniske data				
Storage temperature	- 40 °C - + 85 °C			
Relative humidity	< 95%, non-condensing			
Weight	About 30 g	About 35 g	About 34 g	About 35 g
Dimensions, WxLxH	42 x 40 x 17 mm	42 x 64 x 17 mm	42 x 77 x 22 mm	42 x 96 x 17 mm
Marking/approvals				
CE marking	Fulfils requirement when mounted in electricity meter			
Load control output				
Voltage rated / max. switching	230/400 VAC			
Max current	5A/1250 VA	2 x 5A/1250 VA	2x5A/1250VA	2x5A/1250VA
Resistance On/Off	-	-	-	-
Isolation voltage (open contact)	1000 V			
Pulse input				
Cable length, max	20 m	-	-	-
Cable capacity, max	10 nF	-	-	-
Leak current, contact max	0.5 µA	-	-	-
Frequency, max	25 Hz	-	-	-
No. of pulses before display update	See Technical Description	-	-	-

Connection diagram – 5A load control module

The module is mounted in the module area of the electricity meter. The module can only be mounted in Kamstrup electricity meters with 8-pin module connection.



Load control output

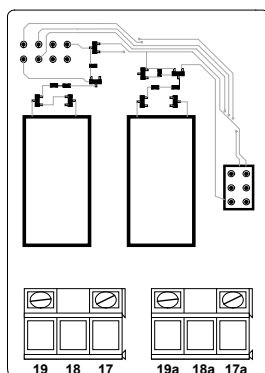
- 17 NC
- 18 Common
- 19 NO

Pulse input

- 65 + Signal current to passive output
- 66 - Signal current from passive output

Connection diagram – Pulse module and 5A load control module

The module is mounted in the module area of the electricity meter. The module can only be mounted in Kamstrup electricity meters with 8-pin module connection.



Load control output 1

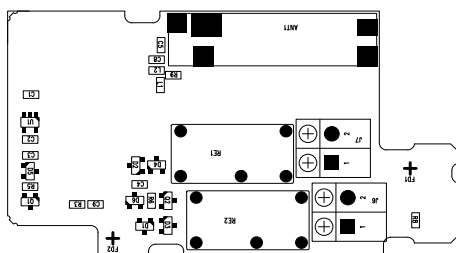
- 17 NC
- 18 Common
- 19 NO

Load control output 2

- 17a NC
- 18a Common
- 19a NO

Connection diagram – 2 x 5A load control add-on module for GSM8i (2G)

The module is mounted on a GSM8i (2G) module in the module area of the electricity meter. For meters before generation M, the module can only be mounted in Kamstrup electricity meters with high cover.



Load control output 1

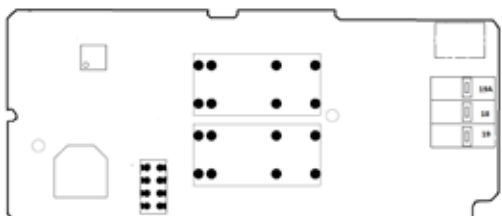
- 18 Common
- 19 NO

Load control output 2

- 18a Common
- 19a NO

Connection diagram – 2 x 5A load control module for OMNICON 2G modem and GSM3P

The module is mounted under a OMNICON 2G modem or a GSM3P module in the module area of the OMNIPower meter. Always use an external antenna on the OMNICON 2G modem and GSM3P module with an antenna adapter [Item number: 6699080]



Load control output 1

18 Common
19 NO

Load control output 2

18 Common
19a NO

Ordering

Type number	Description
68 50 058	Pulse module and 5A load control module
68 50 069	2x5A load control module
68 45 005	2x5A load control module, add-on (GSM8i)
68 50 086	2x5A load control module (Add-under for OMNICON 2G modem, GSM3P module or OMNICON MUC module)
66 99 080	Antenna adapter (for 6850086)
59 60 148	High cover for 162 (generation L and K)
59 60 253	High cover for 382 (generation L and K)

Kamstrup A/S

Industrivej 28, Stilling
DK-8660 Skanderborg
T: +45 89 93 10 00
F: +45 89 93 10 01
info@kamstrup.com
kamstrup.com