

Operators' Guidelines for MULTICAL®

Measuring energy


MULTICAL heat meter functions in the following manner:


The water meter registers the quantity [m³] of district heating water that circulates in the heating installation.

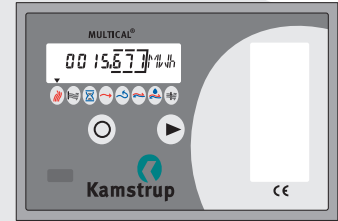
The temperature sensors placed in the flow and return pipes register the degree of cooling in the heating installation, i.e. the difference between the inlet temperature and the outlet temperature.

Using this information **MULTICAL** is able to calculate the amount of energy consumed.


MULTICAL® display

When you press the front key  and hold it down for one second, a new reading will be displayed.

When you press the front key  and hold it down for one second, a new reading will be displayed.



Consumed energy is the default reading, which will be displayed again 220 seconds after the key has been activated.

NB: The arrow  indicates the type of measurement displayed. The unit can be seen to the right in the display.

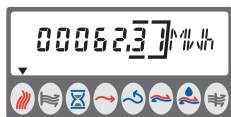

Kamstrup

Kamstrup A/S
Industrivej 28, Stilling
DK-8660 Skanderborg
TEL: + 45 89 93 10 00
FAX: + 45 89 93 10 01
WEB: www.kamstrup.com

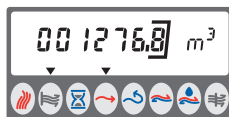
5511-574 GB / 01-10 / REV.A1



Primary display



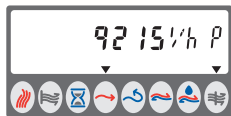
Accumulated heat energy.



Accumulated district heating water.



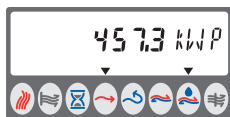
Actual flow rate for heat.



Peak flow rate for heat.



Actual heat power.



Peak heat power.



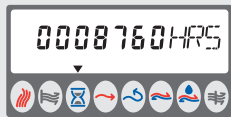
Flow pipe temperature for heat.



Return pipe temperature for heat.



Differential temperature for heat.



Operating hours.



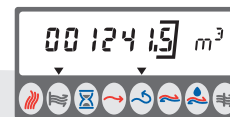
Information code.



Number of operating hours with info > 000.



Secondary display



Accumulated hot tap water.



Hot tap water flow rate.



Customers Number.



Actual date.



Target date.



Display test.

Contact your supplier, if you have questions concerning the functioning of the meter.