

Quick Guide Installation Steps

- 1 Important information before installation
- 2 Installation
- 3 Info codes and display
- 4 Check the installation

1.1 Important information before installation

Only installers are approved to perform installation

QR code linking to kamstrup.com

QR code linking to products.kamstrup.com

1.2 Important information before installation

Permitted water temperature: 0.1...30 °C (T30) ✓

Maximum operating pressure: PN16 ✓

Fixed installation with min. vibration. Electromagnetic environmental class: Residential and commercial

1.3 Important information before installation

Condensing humidity permitted. 5...55 °C ✓

The meter can be mounted indoors in utility rooms and outdoors in meter pits or meter boxes. Increased ambient temperature can adversely affect battery life

Avoid direct sunlight

Avoid freezing conditions

1.4 Important information before installation

IP68-rated (waterproof-submersible) ✓

2.1 Check the manifold before installation

ATTENTION: The warranty will be void if the meter is incorrectly installed. Check the integrity of the manifold, and replace the manifold before installation if there are any damages

Recycle damaged manifold

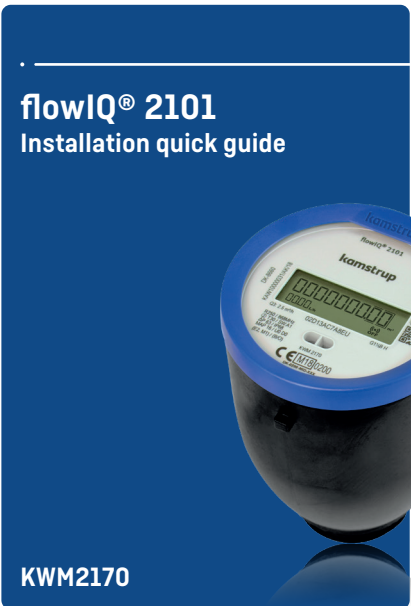
Replace with a new ✓

2.2 Ensure correct piping during installation

The meter should only be installed upright

Kamstrup A/S
 Industrivej 28, Stilling
 DK-8660 Skanderborg
 T: +45 89 93 10 00
 F: +45 89 93 10 10
 info@kamstrup.com
 kamstrup.com

Think forward



Kamstrup A/S · 55122435_A1_GB_03.2020

Ensure correct pressure during operation 2.3

The meter is filled with water during operation ✓

≥ 0.3 bar ✓

Water pressure is low ✗

Avoid entrained air ✗

< 0.3 bar ✗

Air ✗

Avoid heavy flow disturbance in the water flow 2.4

Fully open ✓

Fully closed ✓

Partially open ✗

Ensure sealing ring is in place before installation 2.5

Take care not to drop and lose the sealing ring when moving the meter from the packaging

Sealing ring dropped ✗

Sealing ring is fixed ✓

Install meter with an installation key 2.6

Install meter with an installation key ✓

Grab meter with the key

Tighten meter clockwise

Important! Be aware of maximum torque 2.7

Ensure tightening torque between 15-30 Nm ✓

Tighten meter clockwise

Info codes and display 3

Display for flowIQ® 2101

Info codes in the display

Info code	Meaning
↻	The water flows in reverse direction
🚰	Possible leak
🏠	Possible broken pipe
⊗	Meter is missing water
👤	Attempt of fraud
📶 OFF	The meter is still in transport mode
🔋	Battery needs to be replaced

Check the installation 4.1

Installation is complete

Check placement of **decimal point** is as ordered ✓

Radio is still **OFF** and **"RadioOff"** is highlighted ✓

Check the installation 4.2

Open the water supply

Check the installation 4.3

Water is **flowing**. Check display status after 4 sec.

Radio is **ENABLED** and **"RadioOff"** turns off ✓

Check display after 32 sec. Confirm progress ✓

www.kamstrup.com