

LCD display

The phase indications L1, L2 and L3 have more than one function, they indicate one of three situations described below:

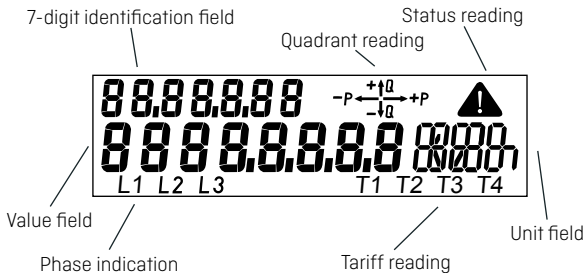
Segments L1- L3	Indicate
On	Both voltage and load above minimum limit. Active phases indicate consumption.
Off	The voltage is below minimum limit.
Blinking	Segments L1 – L3 function as load indicators. Voltage is above and load is below minimum limit. The load indicator is active 4 hours after meter reset. If input and output have been switched on the single measuring system, the segments L1 - L3 will keep flashing even though there is load on the phase.

If the load exceeds the minimum limit and the meter is configured with this reading, consumption will be indicated via the quadrant reading.

The meter's LED can be used provided that the quadrant indicator is not selected.

The measured unit is displayed in the right side of the display.

Tariff indicating active tariff.



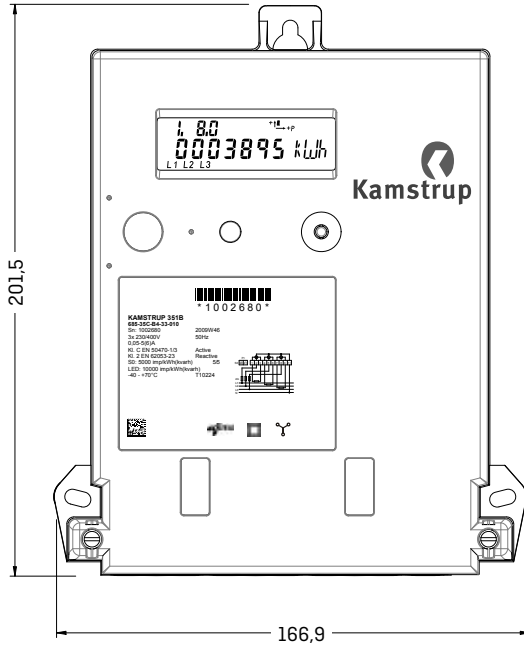
Terminals

Size: 2,5 – 10 mm²

Screw: Ph 2 / 6x1 mm

Torch: 2,5 – 3 Nm

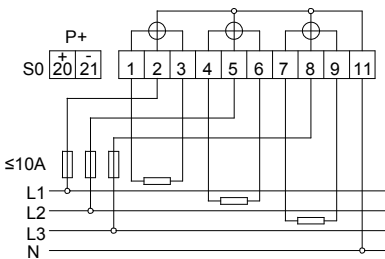
Installation dimensions



Connection diagrams

The valid connection diagram appears from the type label.

3-phase, 4-wire



3-phase, 3-wire (Aron)

