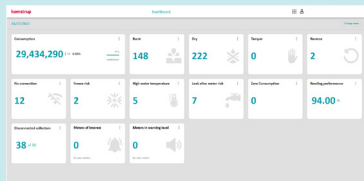
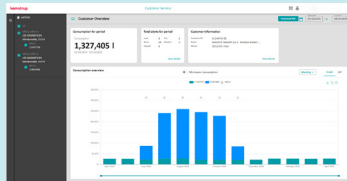


## Claim operational excellence in your water distribution network with flowIQ® Smart Water Platform – Everywhere you go

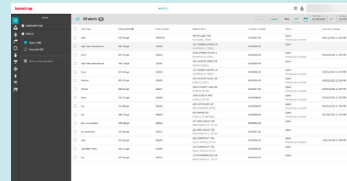
- Receive automatic and reliable remote meter reading at very long ranges
- Transform raw data into actionable insights via the at-a-glance dashboard
- Enjoy data immediacy in a flexible, future-ready solution
- Protect and align your utility with a secure cloud-based solution



The icon-based **performance dashboard** displays key performance indicators across your utility using a visual top-down approach for easy issue identification.



The **customer service overview** enables you to respond to inquiries and quickly resolve customer issues using our customer-specific analysis tool.



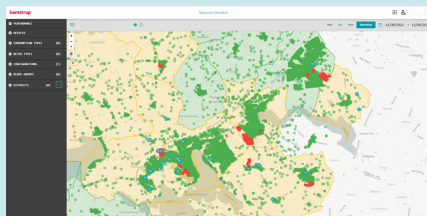
The **alerts module** enables you to investigate, prioritize, and take early action on abnormal consumption and meter health based on intelligent alerts to minimize water loss.



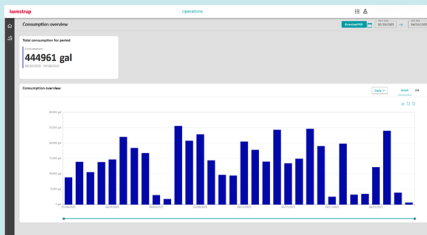
Use our mobile app to read meters from the street as a **fall-back option**.

## Easy conversion from raw data to actionable insights with flowIQ<sup>®</sup> Smart Water Platform

Stay on top of network performance with **Network Monitor**. Access the module from a dashboard tile and quickly identify and resolve connection issues ensuring stable performance across the utility.

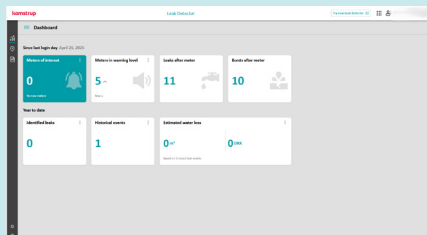


The **operations module** allows you to easily analyze consumption at a utility level with a drill-down overview.



Easily search for leaks with the add-on module Leak Detector

Gain access to **Leak Detector** and find high value leaks and reduce non-revenue water using our unique point of reference technology approach to issue identification and tracking.



### In addition, flowIQ<sup>®</sup> Smart Water Platform offers other great features

#### System Security & Support:

- Best in class Fixed network support
- Cellular installation, configuration and support
- User management with roles & permissions
- API access

#### User Experience & Accessibility:

- Intuitive, icon-based navigation
- Map visualization of meters and infrastructure
- Mobile app for installation, logging and verification
- Customize unit measurement and set up billing cycle in 'settings'

#### At or Near Real Time Data & Analytics:

- Analytics optimized with machine learning/artificial intelligence
- Automatic import & export
- Water loss analysis & meter exchange
- Download consumption report & CSV-file of alarms

#### Incident Notifications:

- Consumption alerts
- Meter event notifications via text message or email
- Intelligent alerts

and much more...