

Radio reading of EVL heat and volume meters

**Wireless radio reading of 9/9V/9EVL –
10EVL and 11EVL**

**Operates within a license-free frequency
band**

**Connects easily via the RS232 plug-in
module of the meter**

Built-in antenna

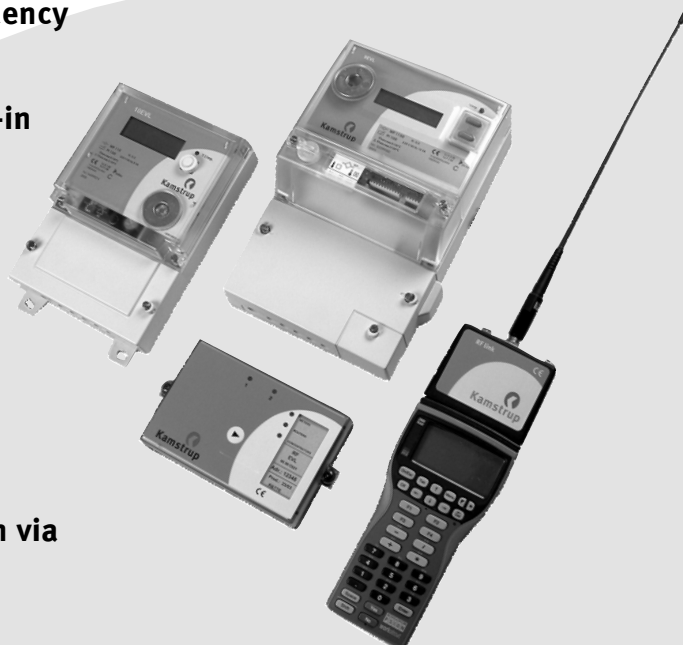
Supplied from the meter

**No configuration necessary –
Plug and Play**

2 extra pulse inputs

**Route planning and data acquisition via
Kamstrup standard PC software**

Prepared for radio network



Application

Kamstrup has developed a radio unit for wireless reading of EVL heat and volume meters, which makes it possible to transfer data without disturbing the customer.

RF EVL is supplied complete with 1.5 meter data cable to connect to the RS232 insert card of the meter.

Within 30 seconds after connecting the data cable, the EVL meters are ready to be read via the MULTITERM WA hand-held unit.

It is possible to select between data acquired directly in the meter, or data acquired in the memory of the radio module.

If you choose to collect data directly in the meter, the actual data on the reading time is acquired.

Data from the memory of the radio module might be up to 1 hour old, but in return the acquisition time is reduced considerably.

RF EVL has 2 extra pulse inputs for direct connection of e.g. water or electricity meter, so that both heat, water and electricity can be read at the same time.

At the utility the read data are easily transferred to PcTerm/PcBase.

The radio module operates in a license-free frequency at 433 MHz.

Other radio systems such as car and baby alarms, automatic garage openers, wireless door bells and GSM will not affect Kamstrup's radio system.



Kamstrup A/S
Industrivej 28, Stilling
DK-8660 Skanderborg
TEL: +45 89 93 10 00
FAX: +45 89 93 10 01
E-MAIL: info@kamstrup.com
WEB: www.kamstrup.com

Data telegram

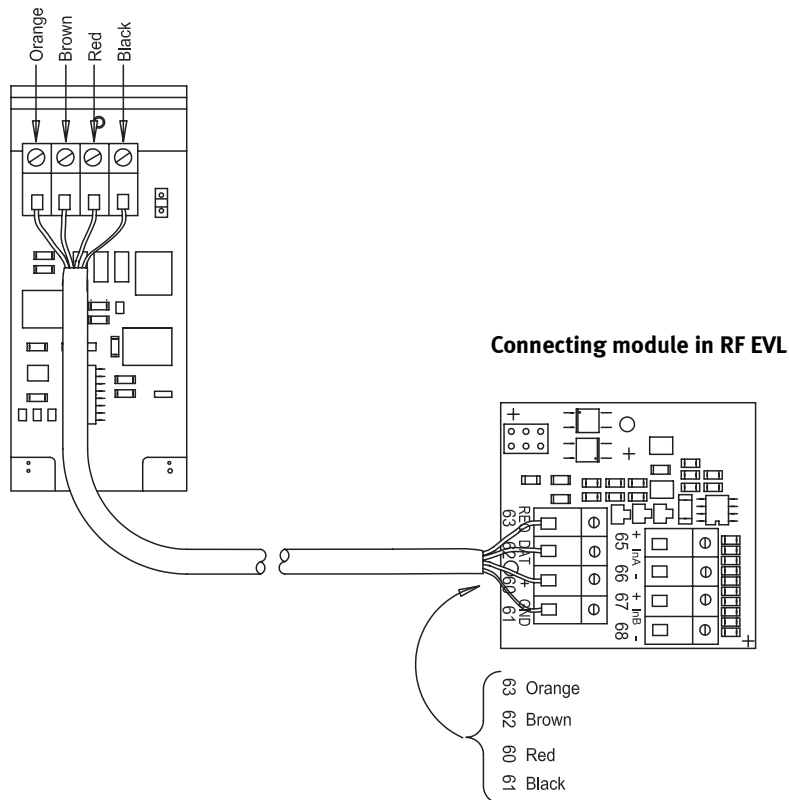
Following data is transferred to the database, PcBase, via the receiver programme, PcTerm:

9EVL-10EVL-11EVL	9 - 9V
Customer number (ID)	Customer number (ID)
In-A	In-A
In-B	In-B
Energy	*
Volume	Volume
Hour counter	Hour counter
T_f	*
T_r	*
ΔT	*
Power	*
Flow	Flow
Peak power	*
Peak flow	Peak flow
Info	Info

* Is not used by 9 - 9V, "0000000" is transferred for database adjustment

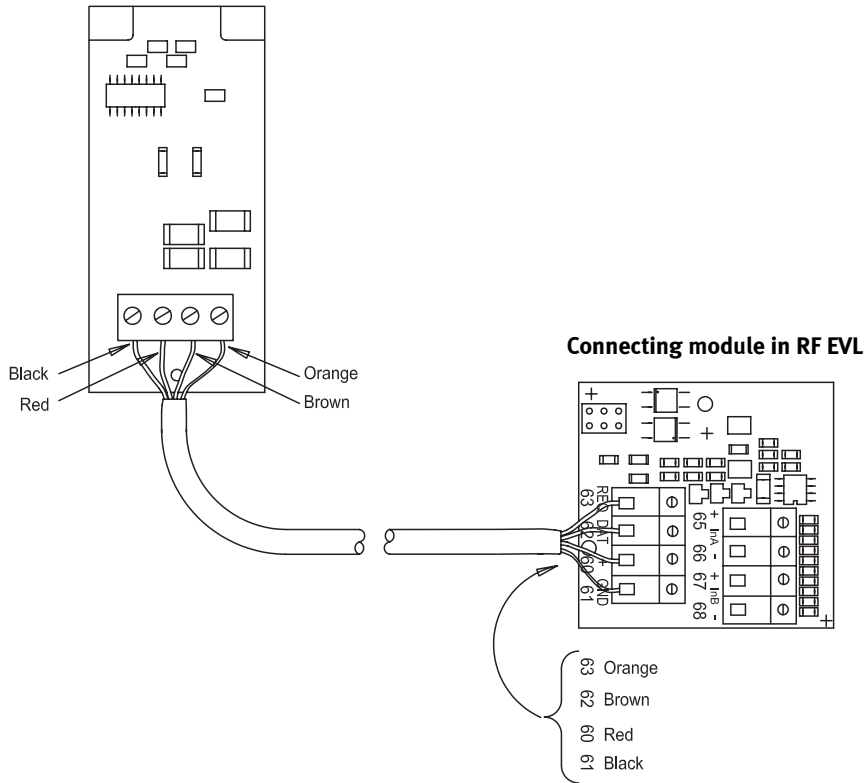
Connecting diagram for 9/9V/9EVL and 11EVL

**RS232 insert card for
9/9V/9EVL and 11EVL**



Connection for 10EVL

RS232 insert card for 10EVL



Technical data

ELECTRICAL DATA

Supply	Supplied via the meter
Range	Up to 200 meters
Frequency	433 MHz
Output	10 mW

Typical reading times	9/9V/9EVL - 10EVL - 11EVL
Data from memory	12 seconds
Data directly from meter	23 seconds

MARKING/APPROVALS

R&TTE directive	EN 300 220 - class 2 EN 301 489
-----------------	------------------------------------

CE-marking

Order specification

Description	Type no.
RF EVL	66-99-C203
RS232 insert card for 9/9V/9EVL and 11 EVL	42402
RS232 insert card for 10EVL	42414
Hand-held unit MULTITERM type MX, incl. flash (GB/SE)	66-99-181/-185
RF-Link including antenna	66-99-410
Docking station	66-99-411
LIF/COM Converter	66-99-415
PcTerm/PcBase receiver software for Windows 98/2000	S7590-404
PcTermRoute route planning software for Windows 98/2000	S7590-406