

## Data sheet

### flowIQ® 2200 and 3200 Reclaimed Water

- Ultrasonic measurement
- Sustainable measurement accuracy
- Temperature measurement
- IP68 Vacuum sealed construction
- Flow measurement in display
- Acoustic leak detection in service and distribution lines



## Contents

---

Meter face details	3
Meter sizes	4
Ordering details	6
Configuration - flowIQ® 2200 and 3200	8
Accessories	9

## **Electronic ultrasonic Reclaimed water meter for measurement of Reclaimed water consumption in households, multi-unit buildings and industry**

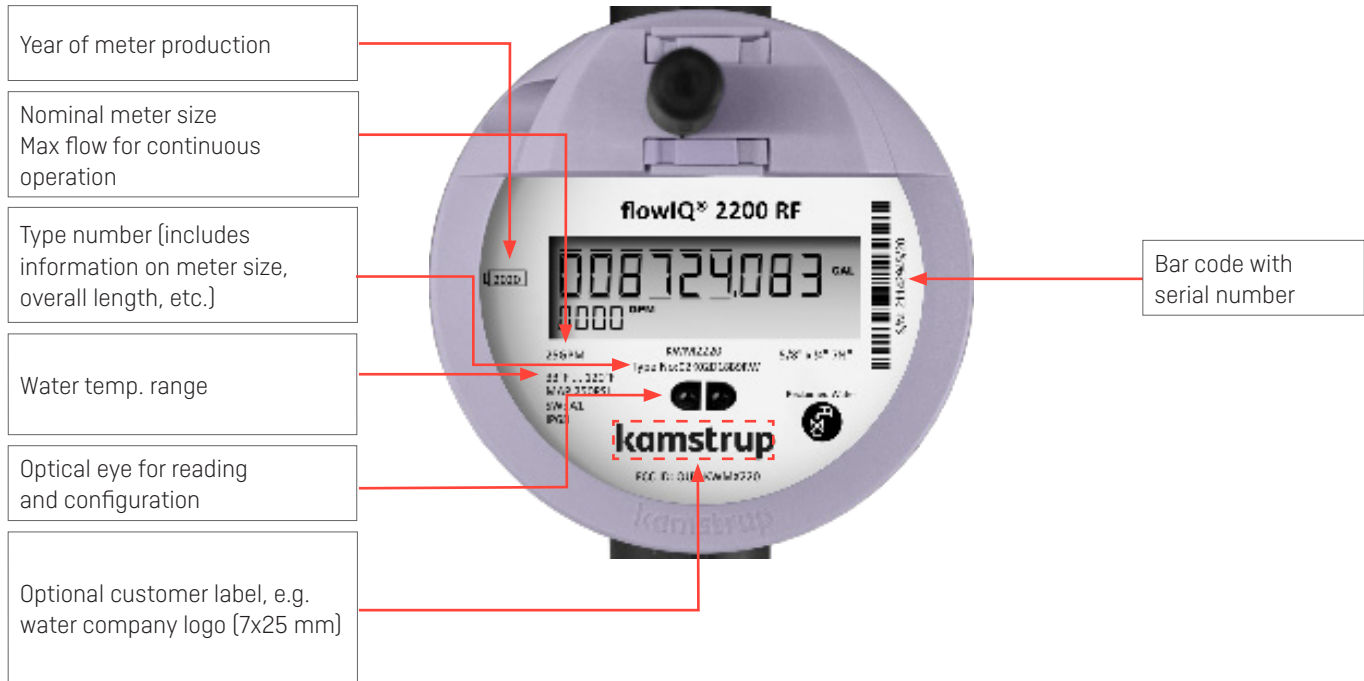
---

Kamstrup Reclaimed Water meters are based on the well-known flowIQ® 2200 and 3200 products. For further information in regard to Metrology, communication or other, please refer to the product specific data sheets.

Note: Reclaimed Water is not suited for drinking.

## Meter face details

Meter information in permanent laser engraved text.



## Meter sizes

flowIQ® 2200 is available in these sizes:

Type number	Meter size	Start flow <sup>1)</sup> [S]	Min. flow	Transition flow	Max flow	Sat. flow rate	Pressure loss SMOC	Connection on meter	Lay length	Strainer	Temp. measurement of water
RF version	Inches	[GPM]/ [L/h]	[GPM]/ [L/h]	[GPM]/ [L/h]	[GPM]/ [m³/h]	[GPM]/ [m³/h]	[PSI]/ [bar]	NPSM thread	[Inches] /[mm]		
02-K-02-D-1-8A-9RW	½" x ½"	0.01/ 2.27	0.05/ 11.4	0.1/ 22.7	25/ 5.68	35/ 7.95	6.2/ 0.43	¾"	7½"/ 190	Yes	Yes
02-K-02-D-1-8B-9RW	¾" x ¾"	0.01/ 2.27	0.05/ 11.4	0.1/ 22.7	25/ 5.68	35/ 7.95	7.7/ 0.53	1"	7½"/ 190	Yes	Yes
02-K-02-D-1-8R-9RW	¾" x ¾"	0.01/ 2.27	0.05/ 11.4	0.1/ 22.7	25/ 5.68	35/ 7.95	7.7/ 0.53	1"	5.1"/ 130	Yes	Yes
02-K-02-D-1-8C-9RW	¾"	0.015/ 3.4	0.05/ 11.4	0.1/ 22.7	32/ 7.27	45/ 10.22	9.0/ 0.62	1"	7½" or 9"/ 229	Yes	Yes
02-L-02-D-1-8B-9RW	¾" x ¾"	0.015/ 3.4	0.10/ 22.8	0.15/ 34.1	25/ 5.68	35/ 7.95	3.8/ 0.26	1"	7½"/ 190	No	Yes
02-L-02-D-1-8N-9RW	¾"	0.025/ 5.68	0.10/ 22.8	0.15/ 34.1	35/ 7.95	49/ 11.13	3.9/ 0.27	1"	7½"/ 190	No	Yes
02-L-02-D-1-8L-9RW	¾"	0.03/ 6.8	0.10/ 22.8	0.15/ 34.1	35/ 7.95	49/ 11.13	3.9/ 0.27	1"	9"/ 229	No	Yes
02-L-02-D-1-8D-9RW	1"	0.04/ 9.1	0.25/ 56.8	0.4/ 90.8	55/ 12.49	77/ 17.49	3.1/ 0.21	1¼"	10¼"/ 273	No	Yes

**Note!** 02-K-02-D-1-8C-9RW can be ordered with a 1½" extension and washer (installed by the customer) to fit 7½" or 9" lay lengths.

**Note!** Flow specifications only apply at temperatures below 86 °F.

1) At flows between 'Start flow' and 'Maximum flow' measurement occurs – however the accuracy is only guaranteed in the range from minimum flow to maximum flow

## Meter sizes

flowIQ® 3200 is available in these sizes:

Type number	Meter size	Start flow <sup>1)</sup> (S)	Min. flow	Transition flow	Max flow	Sat. flow rate	Pressure loss SMOC	Connection on meter	Lay length	Strainer	Temp. measurement of water
RF version	Inches	[GPM]/ [L/h]	[GPM]/ [L/h]	[GPM]/ [m³/h]	[GPM]/ [m³/h]	[GPM]/ [m³/h]	[PSI]/ [bar]	NPSM thread	[Inches] /[mm]		
02-L-02-D-1-8F-9RW	1½"	0.06/ 13.6	0.4/ 90.8	1.2/ 0.27	120/ 27.25	168/ 38.16	5.5/ 0.38	1½"	13"/ 330	No	Yes
02-L-02-D-1-8H-9RW	2"	0.1/ 22.7	0.5/ 113.6	1.5/ 0.34	160/ 36.34	224/ 50.88	1.8/ 0.12	2"	17"/ 432	No	Yes
02-L-02-D-1-8M-9RW	2"	0.1/ 22.7	0.5/ 113.6	1.5/ 0.34	160/ 36.34	224/ 50.88	1.8/ 0.12	2"	15¼"/ 387	No	Yes
02-L-02-D-1-8K-9RW	3"	0.15/ 34.1	2.5/ 567.8	7.5/ 1.70	350/ 79.49	490/ 111.29	3.5/ 0.24	3"	12"/ 305	No	Yes
02-L-02-D-1-8P-9RW	4"	0.35/ 79.5	3.5/ 794.9	5/ 1.14	700/ 158.99	980/ 222.58	2.9/ 0.20	4"	14"/ 356	No	Yes

**Note!** Flow specifications only apply at temperatures below 86 °F.

1) At flows between 'Start flow' and 'Maximum flow' measurement occurs – however the accuracy is only guaranteed in the range from minimum flow to maximum

## Ordering details

Start your order by stating the type number of the selected model of flowIQ® 2200 or 3200. The type number includes information on meter type - meter version, size, lay length, service connection and time zone.

Subsequently the meter configuration, which determines customer-specific requirements such as number of digits in display etc., is selected. The configuration is completed during programming of the final meter.

Accessories are enclosed separately to be mounted by the installer.

### Meter type - flowIQ® 2200

<b>Type</b>	□□	□	□	□	□	□□	□	□□
<b>Meter generation</b>								
Second generation	02							
<b>Mechanical design</b>								
Composite, PPS		K						
Stainless steel		L						
<b>Communication</b>								
RF			02					
<b>Power supply</b>								
D-cell				D				
<b>Dynamic range</b>								
AWWA C715-18					1			
<b>Meter size</b>								
5/8" x 1/2" [25 GPM]; 3/4" NPSM; 7 1/2"								8A
5/8" x 3/4" [25 GPM]; 1" NPSM; 7 1/2"								8B
5/8" x 3/4" [25 GPM]; 1" NPSM; 5.1"								8R
3/4" [32 GPM]; 1" NPSM; 7 1/2" or 9"; includes 1 1/2" extension								8C
3/4" [35 GPM]; 1" NPSM; 7 1/2"								8N
3/4" [35 GPM]; 1" NPSM; 9"								8L
1" [55 GPM]; 1 1/4" NPSM; 10 3/4"								8D
<b>Meter type</b>								
Reclaimed Water								9
<b>Country code</b>								
Reclaimed Water								RW

Kamstrup deliver 3 mm EDPM rubber gaskets, with all flowIQ® 2200 meters.

The features included in the type number cannot be changed once the meter has been produced.

**Meter type - flowIQ® 3200**

<b>Type</b>	<input type="checkbox"/>	<input type="checkbox"/>	<input type="checkbox"/>	<input type="checkbox"/>	<input type="checkbox"/>	<input type="checkbox"/>	<input type="checkbox"/>	<input type="checkbox"/>	<input type="checkbox"/>
<b>Meter generation</b>									
Second generation	02								
<b>Mechanical design</b>									
Stainless steel		L							
<b>Communication</b>									
RF			02						
<b>Power supply</b>									
D-cell				D					
<b>Dynamic range</b>									
AWWA C715-18					1				
<b>Meter size</b>									
1½" (120 GPM); 1½" Flange; 13"								8F	
2" (160 GPM); 2" Flange; 17"								8H	
2" (160 GPM); 2" Flange; 15¼"								8M	
3" (350 GPM); 3" Flange; 12"								8K	
4" (700 GPM); 4" Flange; 14"								8P	
<b>Meter type</b>									
Reclaimed Water									9
<b>Country code</b>									
Reclaimed Water									RW

## Configuration - flowIQ® 2200 and 3200

Config	DDD	JJ	LLL	MMMM	N	P	S	U	RR	CCC	V	T	YY	ZZZ
	□□□	□□	□□□	□□□□	□	□	□	□	□□	□□□	□	□	□□	□□□
<b>Display views</b>														
Standard	810													
<b>GMT offset (time zone)</b>														
USA Eastern (GMT-5)		28												
USA Central (GMT-6)		24												
USA Mountain (GMT-7)		20												
USA Pacific (GMT-8)		16												
<b>Target date (handled as order data)</b>														
<b>Max values averaged over time (1..120 min.)</b>														
2 minutes			002											
<b>Customer label</b>														
Alphanumeric (2060-MMMM)				MMMM										
<b>Leakage message limit</b>														
OFF					9									
Flow continuously > 0.25% of max flow					2									
Flow continuously > 0.5% of max flow					3									
Flow continuously > 1.0% of max flow					4									
Flow continuously > 2.0% of max flow					5									
<b>Pipe burst limit</b>														
OFF					0									
Flow > 5 % of max flow for 30 minutes					1									
Flow > 10 % of max flow for 30 minutes					2									
Flow > 20 % of max flow for 30 minutes					3									
<b>Ambient Temperature low limit</b>														
OFF					0									
Ambient temperature < 3 °C / 37 °F					3									
Ambient temperature < 6 °C / 43 °F					6									
<b>Ambient Temperature high limit</b>														
OFF					0									
Ambient temperature > 35 °C / 95 °F					3									
Ambient temperature > 45 °C / 122 °F					6									
<b>Data logger profile</b>														
Standard (default)									04					
To be continued on next page...														

## Configuration - flowIQ® 2200 and 3200

	DDD	JJ	LLL	MMMM	N	P	S	U	RR	CCC	V	T	YY	ZZZ
<b>Config</b>	□□□	□□	□□□	□□□□	□	□	□	□	□□	□□□	□	□	□□	□□□
...continued from previous page														
<b>Display resolution (alphanumeric)</b>														
0000000.00 USgal - 0.01 GPM - Billing in 1,000s										220				
000000000 ft3 - 0000 GPM - Billing in Billing in 1,000s										154				
<i>For additional options please refer to FILE100002712</i>														
<b>Temperature units of measure</b>														
Fahrenheit											1			
Celsius											0			
<b>Encryption level</b>														
Encryption with separately forwarded key												3		
<b>Communication</b>														
For communication protocols please refer to module data sheets														

	DDD	JJ	LLL	MMMM	N	P	S	U	RR	CCC	V	T	YY	ZZZ
Unless otherwise stated in the order, Kamstrup supplies the following:	810	□□	002	0000	4	3	3	3	04	220	1	3	01	006

**Note:** JJ [timezone] and target date are not predefined and has to be chosen in the ordering system.

## Accessories

See Accessories for Water Meters: FILE100000644

[Accessories are ordered separately in CPQ (Kamstrup ordering system) and will be delivered as single parts in the packaging.]

flowIQ® 2200 and 3200

Kamstrup A/S • FILE1000003532\_G\_EN-US\_04.2026

---

**Kamstrup Water Metering, LLC**

2855 Forsyth Commerce Way, Building 200

Cumming, GA 30040, USA

T: +1 (404) 835-6716

[info-us@kamstrup.com](mailto:info-us@kamstrup.com)

[kamstrup.com](http://kamstrup.com)