

Manual

**Kamstrup 382 DIN**



## Operating instructions

---

Connect the meter in accordance with the installation diagram on the meter's type label.

Depending on the configuration a fixed value will be displayed, or the display will change between selected indications every 10 seconds.

It is possible to change the display reading manually by activating the push button on the meter. The available readings will depend on the meter's configuration.

### Security and installation guidelines

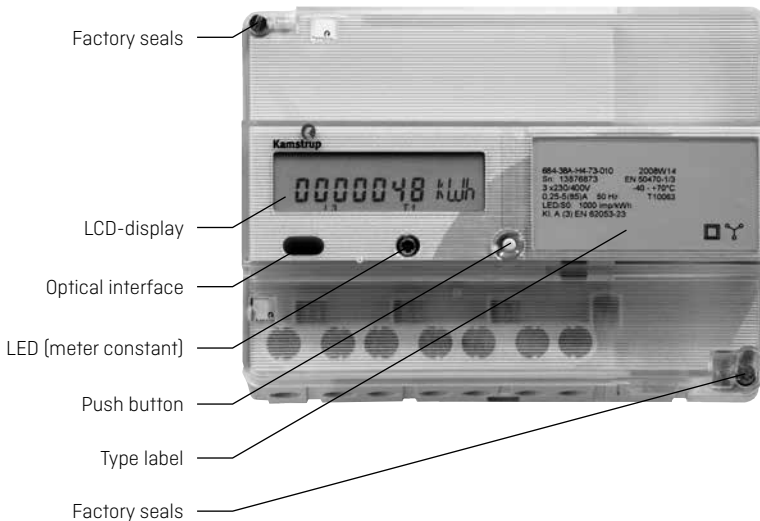
The meter shall only to be used for measuring electrical energy and shall operate within the specified values only.

The meter must be switched off when working on it. It can be highly dangerous to touch the meter parts when the meter is switched on.

Therefore, the relevant security fuse must be removed and kept in a place where it cannot be inserted by unauthorized persons.

Current local standards, guidelines, regulations and instruction must be observed. Only authorized personnel is permitted to install electricity meters.

Meters for direct connection must be protected against short circuit by a security fuse in accordance with the maximum current stated on the meter.



The meter constant LED blinks proportionally to the consumed active energy.

Only authorized personnel must break the utility sealing.

## LCD display

The phase indications (L1, L2 and L3) have various functions. They indicate the two situations described below.

From reset (voltage cut-off) of meter and 4 hours ahead:

Indications L1, L2, L3	Indicate
On	Voltage is above minimum limit (160V), and load is above minimum limit (2.3W).
Off	Voltage is below minimum limit (160V).
Flashing	Voltage is above minimum limit (160V), and load is below minimum limit (2.3W).

After 4 hours' operation:

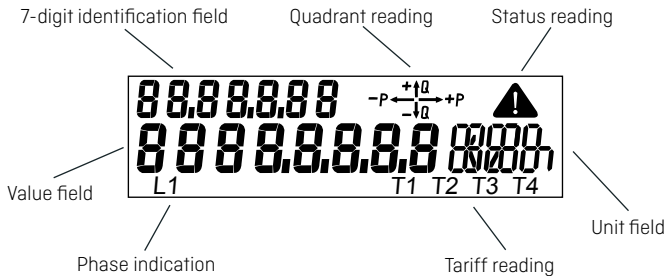
Indications L1, L2, L3	Indicate
On	Voltage is above minimum limit (160V).
Off	Voltage is below minimum limit (160V).

If the load exceeds the minimum limit and the meter is configured with this reading, consumption will be indicated via the quadrant reading.

The meter's LED can be used provided that the quadrant indicator is not selected.

The measured unit is displayed in the right side of the display.

Tariff indicating active tariff.



### Terminals

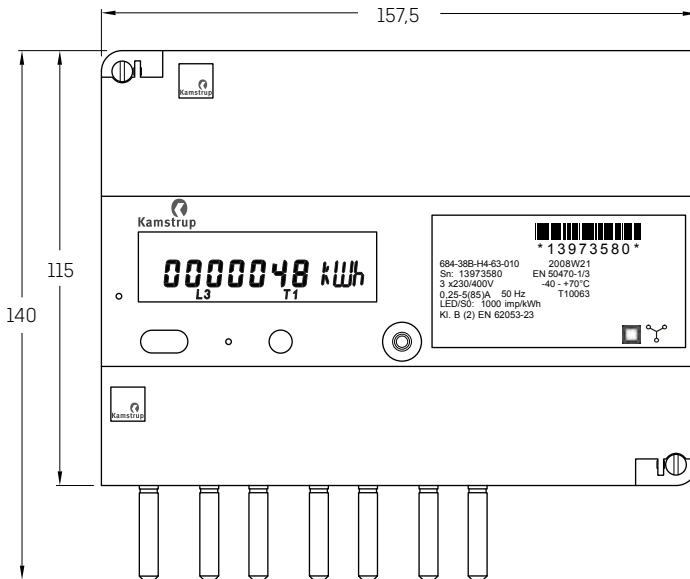
	Multi core	7 core	Massive / terminals
Brass terminal 35 mm <sup>2</sup>	≥ 10 mm <sup>2</sup>	≥ 10 mm <sup>2</sup>	≥ 2,5 mm <sup>2</sup>
Steel terminal 35 mm <sup>2</sup>	≥ 6 mm <sup>2</sup>	≥ 6 mm <sup>2</sup>	≥ 1,5 mm <sup>2</sup>
Steel terminal 25 mm <sup>2</sup>	≥ 6 mm <sup>2</sup>	≥ 6 mm <sup>2</sup>	≥ 1,5 mm <sup>2</sup>

**Versions with integral radio**

If the meter is supplied with integral radio for establishment of remote reading, the meter automatically connects to a radio network. The integral radio is equipped with an internal antenna. The radio signal strength can be read by means of a hand-held terminal. If the radio signal is too suppressed, an external antenna must be connected. Please see current documentation on available antennas.

Mounting a communication module in the meter may influence communication, please contact Kamstrup.

**Installation dimensions**



**Connection diagrams**

The valid connection diagram appears from the type label.

