

flowIQ® 2100 & 3101 – AMR meters

kamstrup

Smart water metering – flowIQ® AMR series

- Proven ultrasonic technology
- Pinpoint accuracy and superior quality
- Leak detection and intelligent alarms



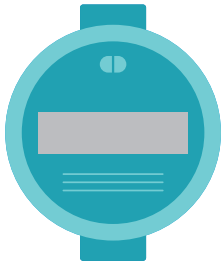
An aerial photograph of a city skyline, likely Atlanta, Georgia, featuring several prominent skyscrapers and a complex multi-level highway interchange with heavy traffic. The sky is clear and blue.

Beating water loss with technology

- ✓ Ultrasonic measurement for precise accuracy
- ✓ Low start-flow down to 0.015 GPM
- ✓ IP68 for submersible conditions and pit installations
- ✓ Integrated 915 MHz radio for drive-by reading
- ✓ Smart alarms for leak, burst dry, tamper and reverse
- ✓ 20 year battery life
- ✓ Configurable leak and burst threshold

flowIQ® 2100 & 3101 series

- the most cost effective and flexible solution for smart water metering



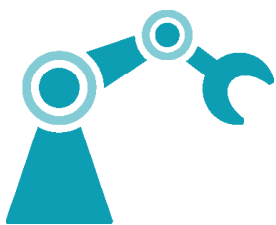
Ultrasonic water meter

flowIQ® 2100 & 3101 ensures that the consumption of every single gallon of water is accurately registered and billed. flowIQ® 2100 and flowIQ® 3101 are tamper-proof with no moving parts which makes them less subject to wear and tear. Furthermore it ensures a high and stable accuracy in the meters lifespan. flowIQ® 2100 & 3101 reads and sustains ultra-low starting flows throughout its entire lifetime. The meter is fully watertight and can be installed without any risk of water ingress to the electronics or condensation in the display. This makes it suitable for fast and safe installation in meter pits for remote reading via the integrated 915 MHz band RF communication.



Tap into the value of data

Intelligent alarms from the meter let you detect leaks and bursts or other irregularities such as tampering attempts or reverse flows quickly and effectively. This limits both the non-revenue water as well as any consequential damages from leaks and pipe bursts – a benefit for the environment and your economy. At the same time, the flowIQ® 2100 & 3101 enables you to monitor both the ambient temperature and the temperature of the water.



Smart meter – smart design

Our automated production process ensures consistent quality, hygienic, and accurately calibrated meters.

The design gives you freedom to install the compact flowIQ® 2100 & 3101 in all operating environments, horizontal as well as vertically, independent of piping and installation conditions.

Product line

flowIQ® 2100

Meter Size
5/8" x 1/2"
5/8" x 3/4"
3/4" x 3/4"
3/4" x 3/4"

flowIQ® 3101

Meter Size
3/4" x 3/4" thread
1" x 1 1/4" thread
1 1/2" x 1 1/2" thread
1 1/2" x 1 1/2" flange
2" x 2" thread
2" x 2" flange

Technical specifications

	flowIQ® 2100	flowIQ® 3101
Start flow	0.015 GPM	As low as 0.04 GPM
Saturation flow rate	33 GPM, 42 GPM	Up to 330 GPM
Battery	3.6 volt battery	3.65 VDC, 1 C cell lithium
Material	Depending on flowIQ® model and size, meter will be either 100 % ecofriendly composite PPS or stainless steel.	

Kamstrup Water Metering, LLC

2855 Forsyth Commerce Way Suite 200
 Cumming, GA 30005, USA
 T: +1 (404) 835-6716
 info-us@kamstrup.com
 kamstrup.com

