

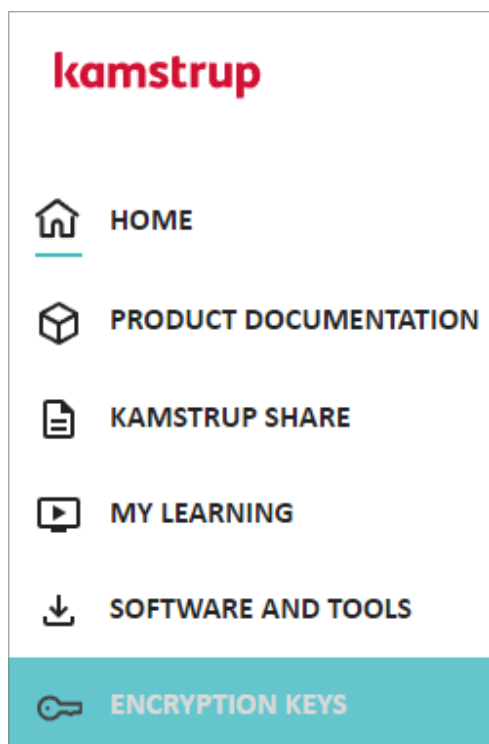
How to register and download your encryption keys

Relevant for companies
not purchasing directly
from Kamstrup



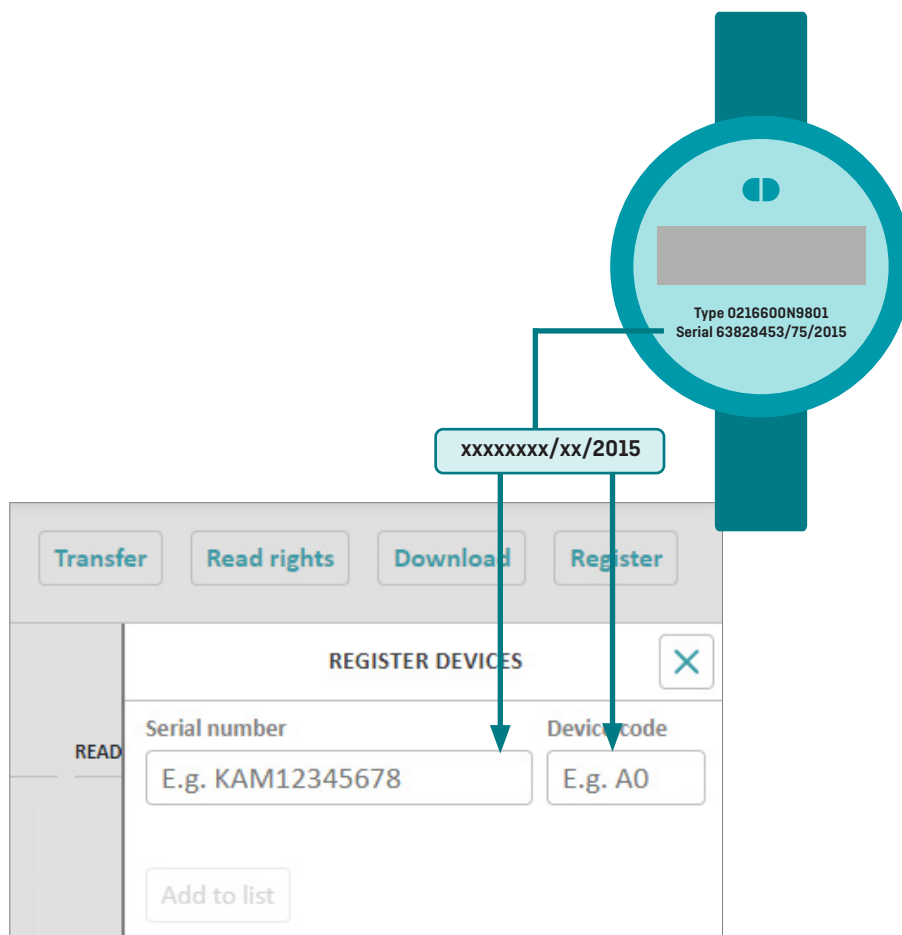
View your encryption keys

1. Go to mykamstrup.com.
2. Log in with your username and password. If you do not have a login, please refer to our online My Kamstrup FAQ for guidance.
3. Select "ENCRYPTION KEYS" from the left-hand menu.



Register your device

1. Click the "Register" button.
2. Enter the serial number and device code of the meter.



Download your encryption keys

1. Select the meter(s) you want encryption keys for, and click "Download" in the top right corner.
2. Choose KEM or KEM2 as format, enter a password if needed, and click "Download" in the bottom right corner.
3. The file is now available in your Downloads folder on your PC.

The screenshot displays the 'Encryption Key Service' web interface. On the left, a sidebar contains navigation options for 'DEVICES', 'ORDERS', and 'PRODUCTS'. The 'DEVICES' section is active, showing a search bar and filters for 'Serial number' and 'Kamstrup id'. The main area shows a table of 27 devices found, with columns for 'SERIAL NUMBER', 'ORDER', 'PRODUCT', and 'READ RIGHTS'. Several devices are selected with checkmarks. On the right, a 'DOWNLOAD DEVICES' dialog is open, showing a summary of selected devices (4 total) and a 'File format' dropdown set to 'KEM'. A password field is present for the download, with a note: 'You need this password again when you import the KEM file into your meter reading system (P-Base, READY Manager, USB Meter Reader etc.)'. At the bottom right of the dialog is a 'Download' button.

SERIAL NUMBER	ORDER	PRODUCT	READ RIGHTS
<input checked="" type="checkbox"/> KAM21354117	21056596	flowIQ® 2200 (KWM3220)	
<input checked="" type="checkbox"/> KAM21340892	21049911	flowIQ® 2200 (KWM3220)	
<input checked="" type="checkbox"/> KAM21335850	21047239	flowIQ® 2200 (KWM3220)	
<input checked="" type="checkbox"/> KAM21335849	21047239	flowIQ® 2200 (KWM3220)	
<input type="checkbox"/> KAM21335848	21047239	flowIQ® 2200 (KWM3220)	
<input type="checkbox"/> KAM21335847	21047239	flowIQ® 2200 (KWM3220)	
<input checked="" type="checkbox"/> KAM21335846	21047239	flowIQ® 2200 (KWM3220)	
<input type="checkbox"/> KAM21335789	21049911	flowIQ® 2200 (KWM3220)	
<input type="checkbox"/> KAM21331080	21049911	flowIQ® 2200 (KWM3220)	
<input type="checkbox"/> KAM21331089	21049911	flowIQ® 2200 (KWM3220)	
<input type="checkbox"/> KAM21331088	21049911	flowIQ® 2200 (KWM3220)	
<input type="checkbox"/> KAM21294558	21051911	flowIQ® 2200 (KWM3220)	
<input type="checkbox"/> KAM21294557	21051911	flowIQ® 2200 (KWM3220)	
<input type="checkbox"/> KAM21294556	21051911	flowIQ® 2200 (KWM3220)	
<input type="checkbox"/> KAM21294555	21051911	flowIQ® 2200 (KWM3220)	

If you cannot register your meters in the Encryption Key Service

1. Contact Kamstrup via email at mykamstrup@kamstrup.com.
2. Include the email address you use for your "My Kamstrup" login, your company name and attach a copy of your invoice.
3. State serial numbers separated by commas e.g. 12345678, 87654321 etc.
4. You will receive a confirmation email from Kamstrup once you have access to your meters - this typically takes 2-3 business days.

Kamstrup A/S
Industrivej 28
DK-8660 Skanderborg
T: +45 89 93 10 00
E: info@kamstrup.com
W: kamstrup.com