

Data sheet

Kamstrup REAdy MTU

- Integrates to Kamstrup US AMI
- Migrate to AMI seamlessly
- Compatible with meters using Sensus UI1203 protocol
- 10+10 year warranty
- Fallback volume
- Indoor and Pit installation IP68 fully submersible



Application

READy MTU is a meter transmission unit that reads encoded output meters. READy MTU is a part of Kamstrup's AMI (Fixed network) solution utilizing an FCC licensed 450-470MHz frequency band.

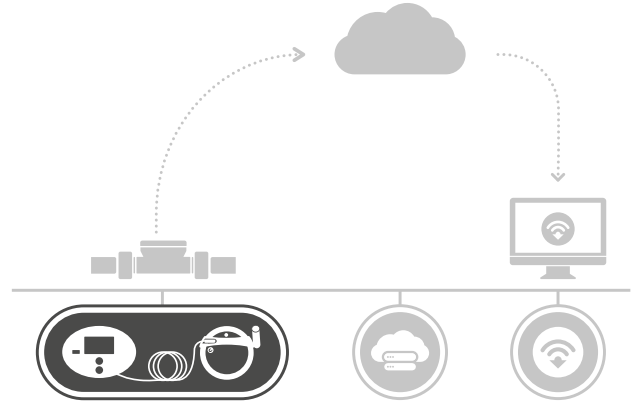
Installation and configuration

READy MTU is easy to install in all operating environments and can be ordered pre-programmed from production allowing quick installation with a minimum of configuration. An LED indicates to the installer that READy MTU is operational before leaving the installation site. The LED turns off automatically after 5 minutes.

If READy MTU is not ordered pre-configured or the configuration needs to be changed, this can easily be done wirelessly using READy App.

Operation

READy MTU captures data from the meter every hour. Data is automatically broadcasted via the licensed AMI radio to READy Manager Meter Data Management software.



Construction

READy MTU is hermetically closed and vacuum-sealed to prevent humidity from reaching the electronics and avoid condensation. The MTU is IP68 (submersible) type tested and can be installed in flooded environments such as meter pits.

In the box

READy MTU is delivered ready to use in a box containing:

- 1 x READy MTU
- 1 x Quick guide

Please see accessories for antennas and brackets.

Technical data

Electrical data

Battery D-cell battery

Mechanical data

Protection class	IP68-rated (waterproof/submersible)
Dimensions	Ø 3.6" x 4" (Ø 91.6 mm x 106 mm) Ø 3.6" x 5.9" (Ø 91.6 mm x 149.8 mm) incl. stub antenna
Weight	Approx. 1.15 Lbs (525 g) incl. stub antenna
Operating temperature	-22 °F...149 °F [-30 °C...65 °C] ^{1,2}
Storage temperature	-40° F... 185 °F [-40 °C ... 85 °C]
Operating humidity	0 % - 100 % non-condensing

¹ Optimal conditions for radio communication is from 0°C ... 65°C (32°F ... 149°F)

² In environments with temperatures below -10°C (14°F), Kamstrup recommends the device is installed indoor

Technical data

Communication

Wireless fallback reading/config.	902 MHz – 928 MHz (unlicensed)
Kamstrup AMI	450 – 470 MHz (FCC licensed)
Antenna	External
Magnet sensor	Activation of MTU radio + installation check
Recommended activation magnet	REAdy Bluetooth Optical Head or similiar magnet with 8.6 lbs/3.9 kg (N35)

Transmission interval

Meter read interval	Hourly top of the hour
Transmission	Every 3 hours

Input

Single meter/register input	Sensus UI-1203 - 3-wire encoded
Wire length	5 ft

Material

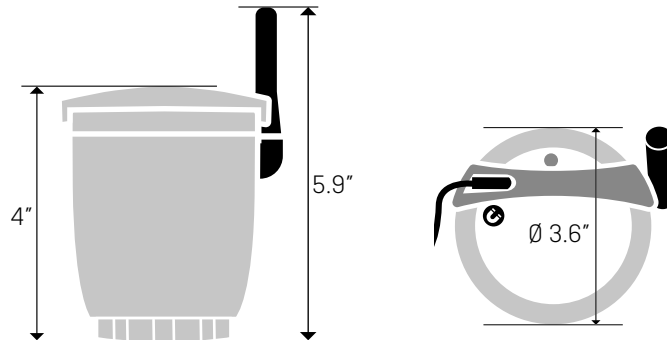
Housing	Polyphenylene sulfide (PPS) reinforcement with fiberglass (40 %)
Top ring (sealing)	Polycarbonate

Radio package options

REAdy MTU is available with AMI Fixed Network. The data package can be pre-configured or configured during installation with REAdy App and REAdy converter.

- Fixed network daily meter reads, sent daily
- Fixed network hourly meter reads, sent every 3rd hour

Dimensional sketches



Accessories

A choice of bracket for installation, antenna and cable is required:

Cable connector:

- flying wire
- Nicor connector
- Itron connector

Antenna

- External stub antenna
- 5" Pit antenna for installation in pit lids
- Wall antenna

Installation

- Wall/pit bracket
- Protection cover for wall installation in sun exposed areas
Dimensions: 7.8" x 6.5" x 4.5" [198 mm x 166 mm x 114 mm]

License Requirements: A license to operate the device on licensed frequencies 450-470MHz is required. READY MTU complies with US FCC rules.

Caution: The battery is not replaceable. Users should make no attempt to replace the battery. Changes or modifications to the equipment that are not expressly approved by Kamstrup LLC void the user's authority to operate the equipment.

Transportation: WARNING: The operation of transmitters and receivers on airlines is strictly prohibited by the Federal Aviation Administration. As such, the shipping of radios and endpoints via air is prohibited unless the radio is completely turned off. Please follow all Kamstrup LCC return and/or shipping/transport procedures to prevent exposure to liability.

Kamstrup Water Metering, LLC

245 Hembree Park Drive, Ste. 110
Roswell, GA 30076, USA
T: +1 (404) 835-6716
info-us@kamstrup.com
kamstrup.com