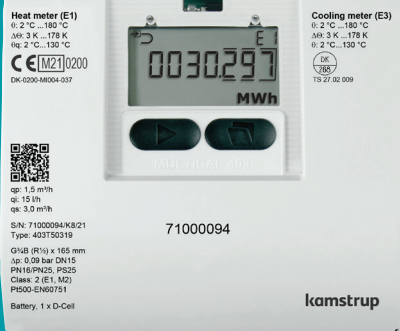




MULTICAL® 403





MULTICAL® 403



> 60 °C



230 VAC



16/25 bar



	04
	05
	07
	12
	19
	22
	24
	27
	28
	31



https://guides.kamstrup.com/userguides/gb_mc403.htm



<https://www.kamstrup.com/en-en/heat-solutions/meters-devices/meters/multical-403/documents>



<https://www.kamstrup.com/>



1/2



MID EN 1434

θ: 2 °C...180 °C Δθ: 3K...178K



DK-BEK 1178 EN 1434

θ: 2 °C...180 °C Δθ: 3K...178K



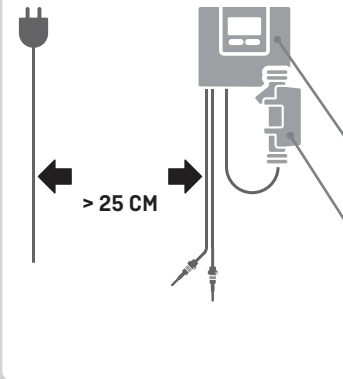
θq: 2°C...130°C



E1 E2



M1 M2



5°C...55°C



IP 54



IP 68



2/2



- | | | |
|----------|-----------|---|
| Data + | HC-003-10 | ✓ |
| Data + | HC-003-11 | ✓ |
| M-Bus + | HC-003-20 | ✓ |
| M-Bus + | HC-003-21 | ✓ |
| WM-Bus + | HC-003-30 | ✓ |

F 28



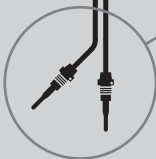
- | | | |
|----------|-----------|---|
| 1xD: | HC-993-02 | ✓ |
| 230 VAC: | HC-993-07 | ✓ |
| 24 VAC: | HC-993-08 | ✓ |
| 2xA: | HC-993-09 | ✓ |

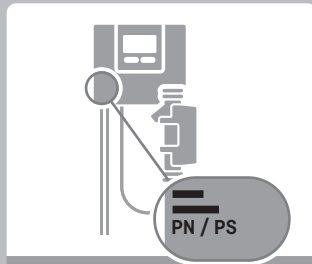
F 29



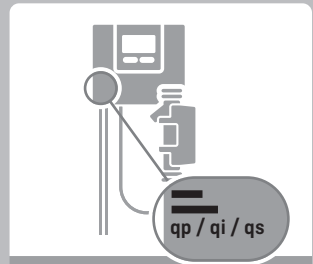
- | | | |
|-----|----------------------|---|
| 2 x | Pt500, DS, L = 1.5 m | ✓ |
| 2 x | Pt500, DS, L = 3 m | ✓ |
| 2 x | Pt500, PL, L = 1.5 m | ✓ |
| 4 x | Pt500, PL, L = 3 m | ✓ |

F 30

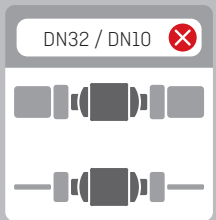
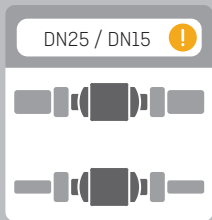
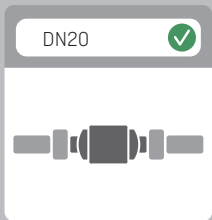
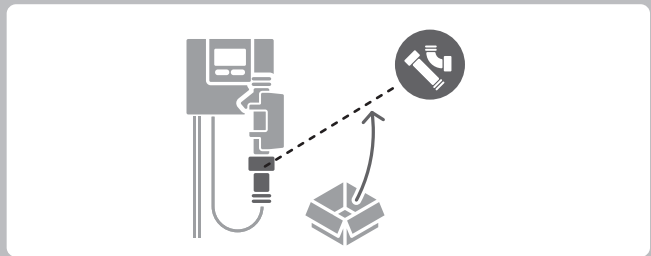


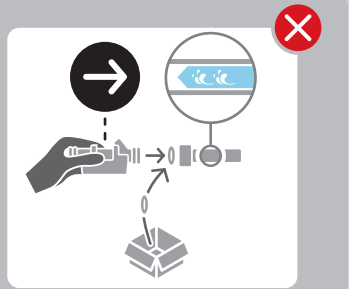
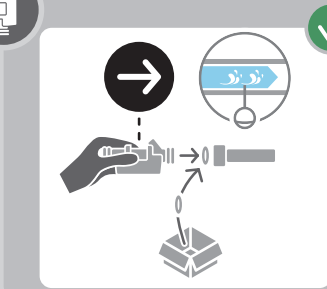
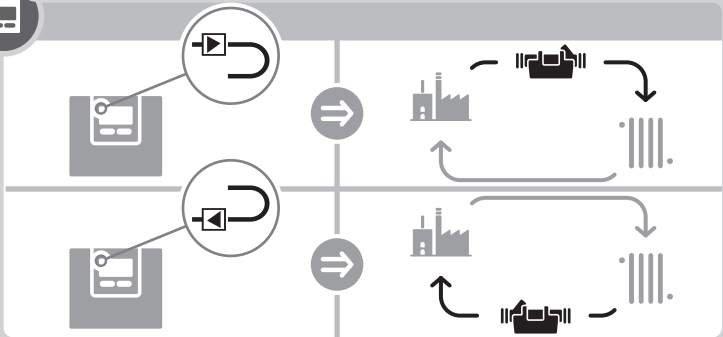
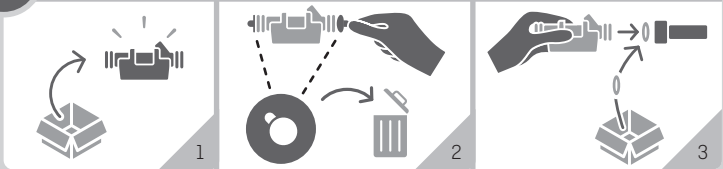


- PN16, PS16 ✓
- PN25, PS25 ✓
- PN16/PN25, PS25 ✓



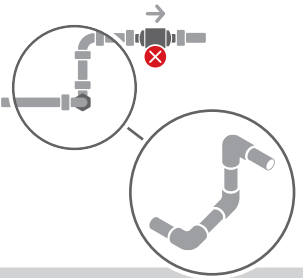
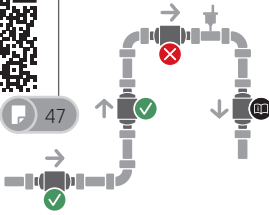
- qp: XX m³/h ✓
- qi: XX l/h ✓
- qs: XX m³/h ✓

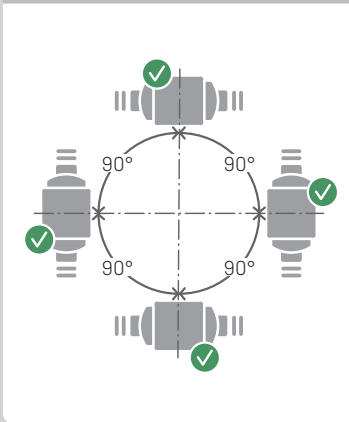






47

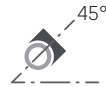




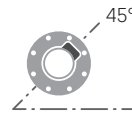
qp 0.6...2.5 m³/h



qp ≥ 3.5 m³/h



qp ≥ 6.0 m³/h

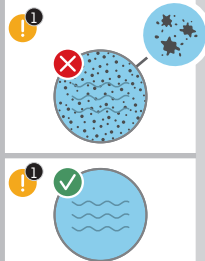
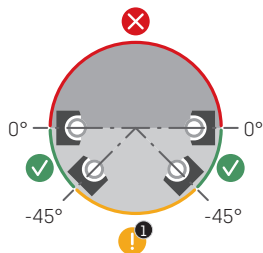




qp 0.6...2.5 m³/h



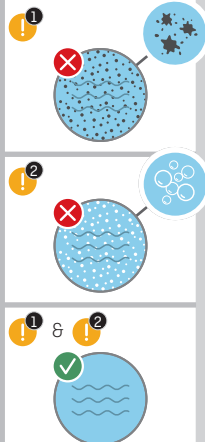
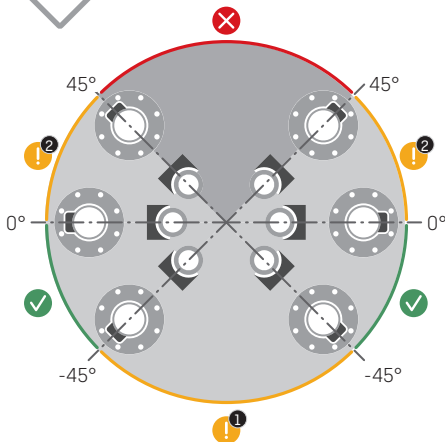
49

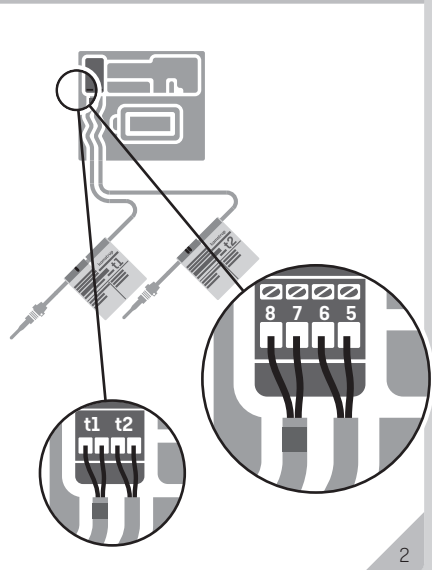
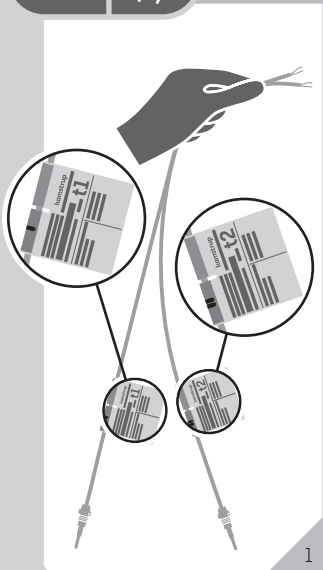
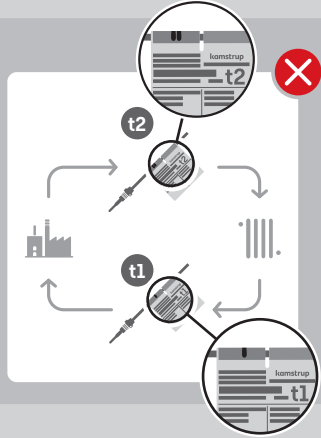
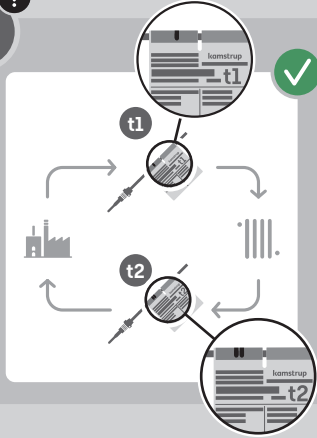


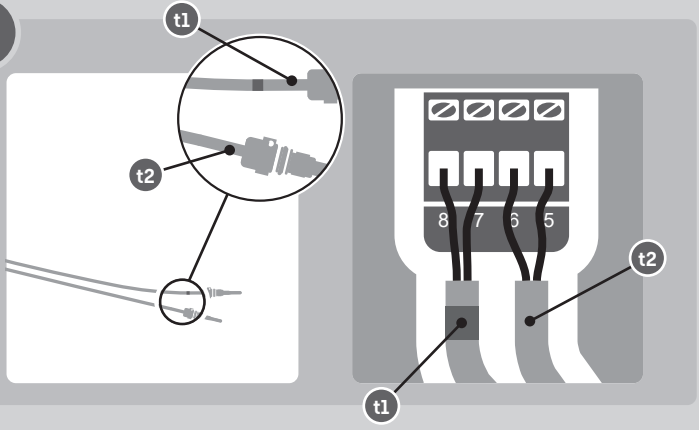
qp ≥ 3.5 m³/h



qp ≥ 6.0 m³/h

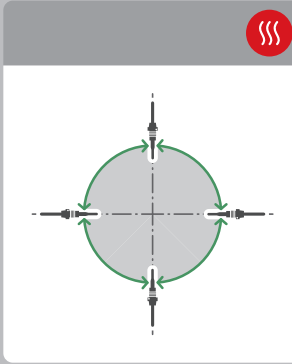
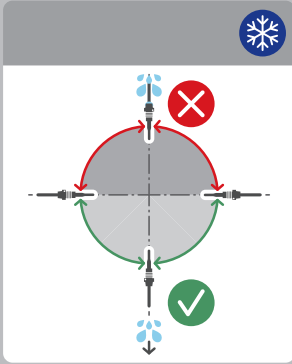
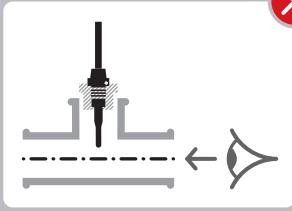
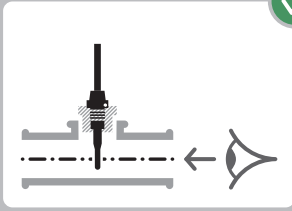






[x1] t1
 [x2] t2
 [x0] t3

	→ t1	⇨ t2	⇨/⇨ t3
	 kamstrup t1	 kamstrup t2	 kamstrup t3
	 kamstrup t1	 kamstrup t2	 kamstrup t3
	 kamstrup t1	 kamstrup t2	 kamstrup t3





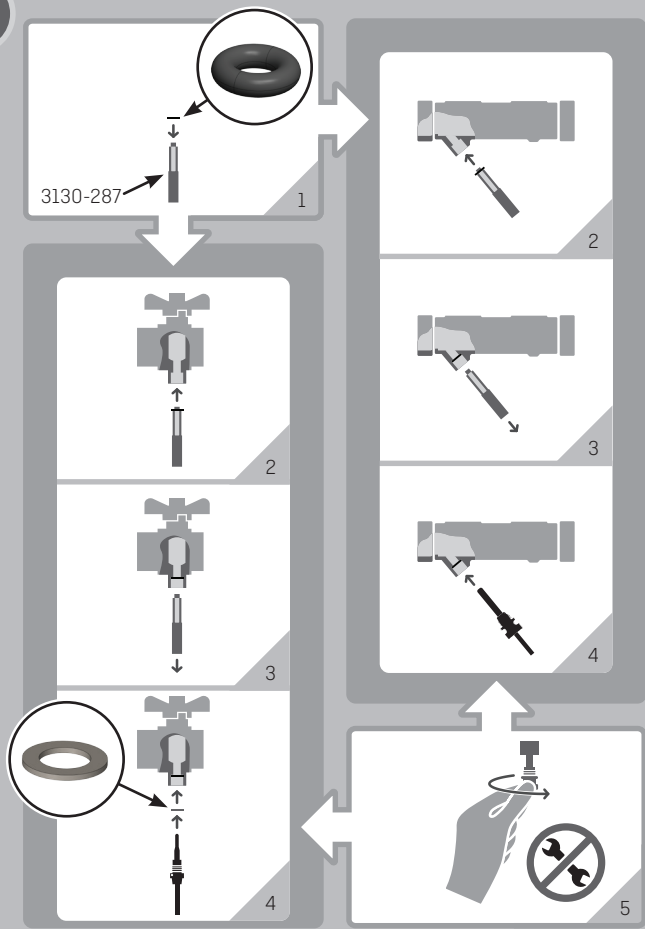
PN16 PN25

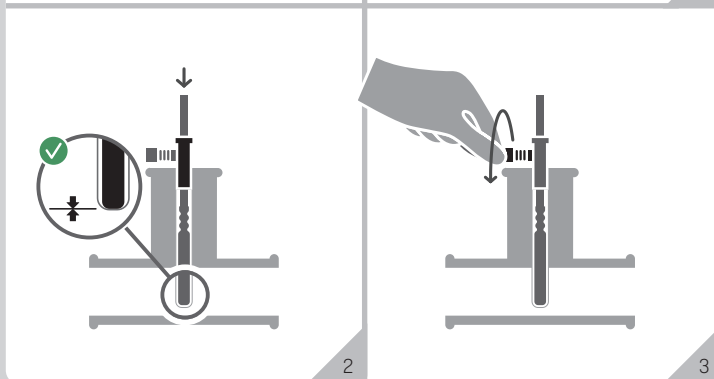
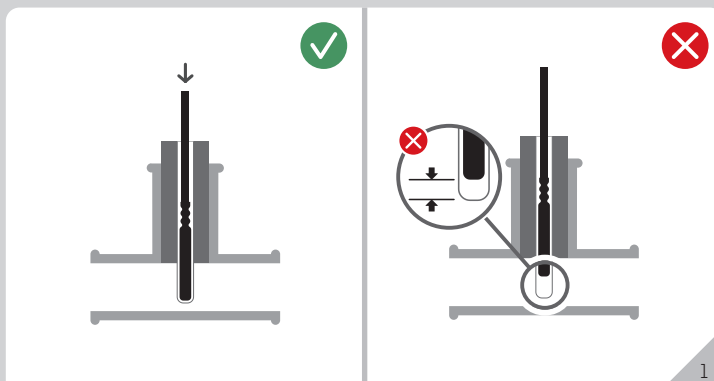
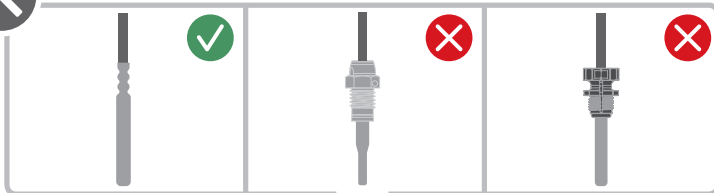
PN16 PN25



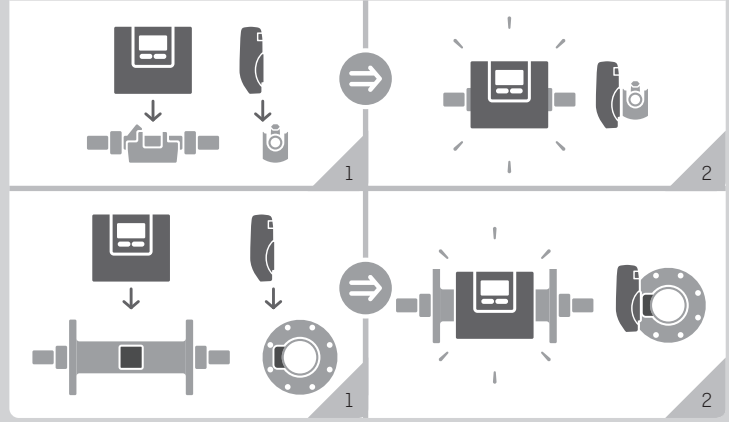
qp	DN	G
0.6-1.5	15	G¾B
0.6-1.5	20	G1B
3.5-6	25	G5/4B
10	40	G2B
15	50	-

+ CIU <input checked="" type="checkbox"/>	+ CIU <input checked="" type="checkbox"/>	+ CIU <input checked="" type="checkbox"/>
DS 27.5	DS 38	PL Ø5.8
X		
X		
X		
	X	
		X

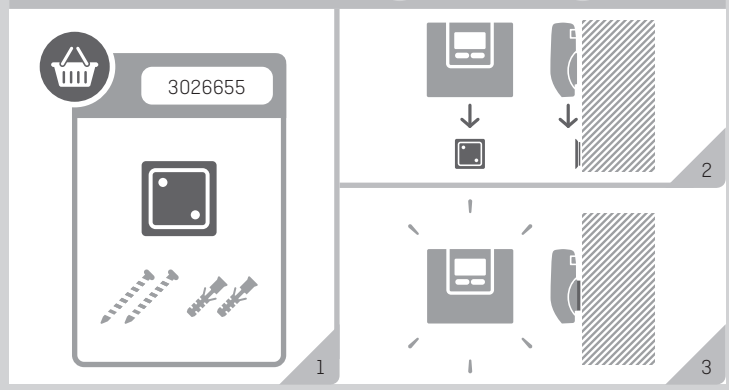








$q_p \leq 2.5 \text{ m}^3/\text{h}$ ✓ $\theta_q > 90 \text{ }^\circ\text{C}$ ✓ $\theta_q < \text{RT}$ ✓

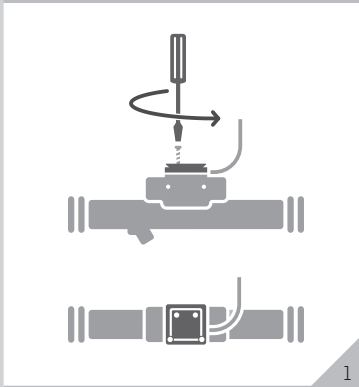




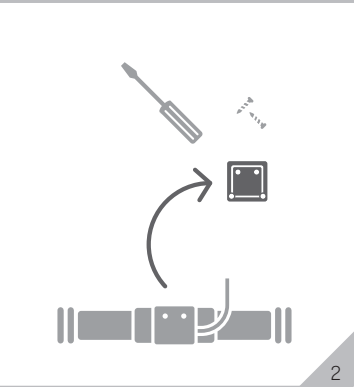
$q_p > 2.5 \text{ m}^3/\text{h}$ ✓

⊘ $\theta_q > 90 \text{ }^\circ\text{C}$ ✓

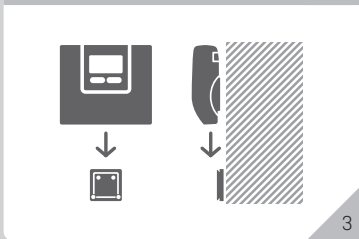
❄ $\theta_q < \text{RT}$ ✓



1



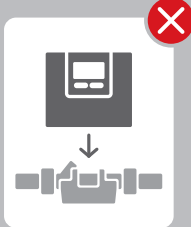
2

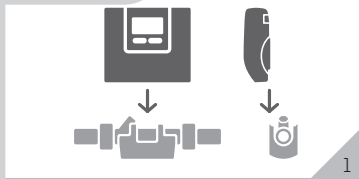


3

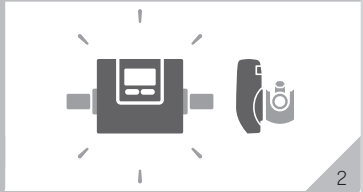


4

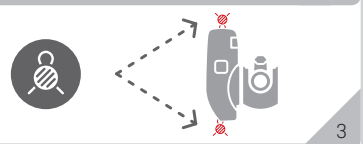
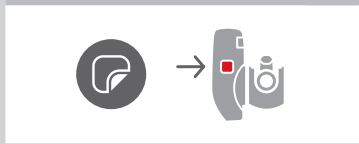




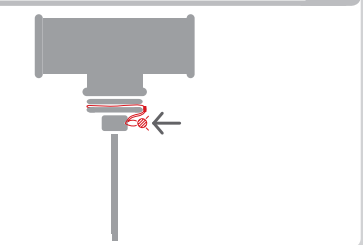
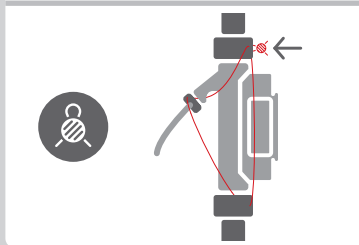
1

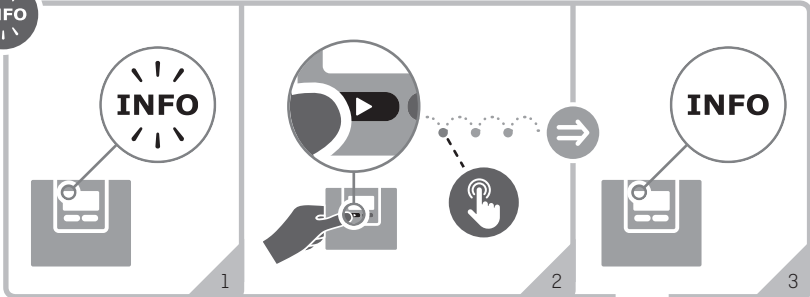


2



3





1/2

	1	2	3	4	5	6	7	8	
Info	t1	t2	0	V1	0	In-A	In-B		
1									
2									
9									
	1								t1 > 185 °C
		1							t2 > 185 °C



INFO

Info	t1	t2	0	V1	0	In-A	In-B
	2						
		2					
	9	9					
				3			
				4			
				6			
						8	
						9	
						8	
						9	

$t1 < 0\text{ }^{\circ}\text{C}$

$t2 < 0\text{ }^{\circ}\text{C}$

$\Delta t (t1 - t2) = \text{X}$

V1:

V1:

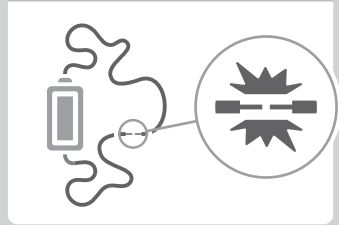
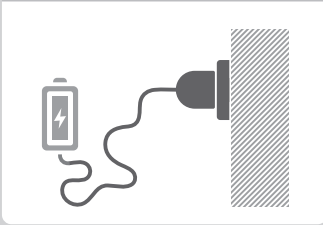
$V1 > q_s$

A:

A:

B:

B:





230 VAC / 50 Hz / 1 W



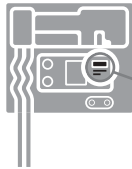
230 VAC / 50 Hz / 1 W

24 VAC / 50 Hz / 1 W



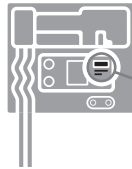
24 VAC / 50 Hz / 1 W

230 VAC



230 VAC

24 VAC



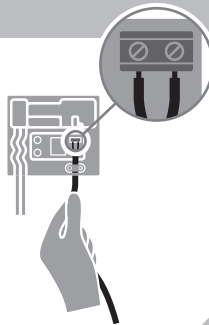
24 VAC



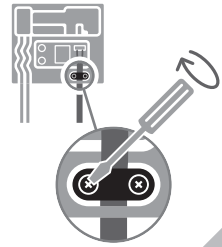
d = 5...8 mm



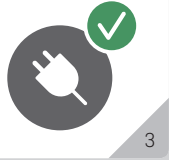
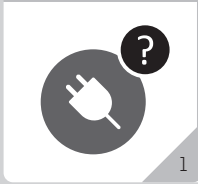
1

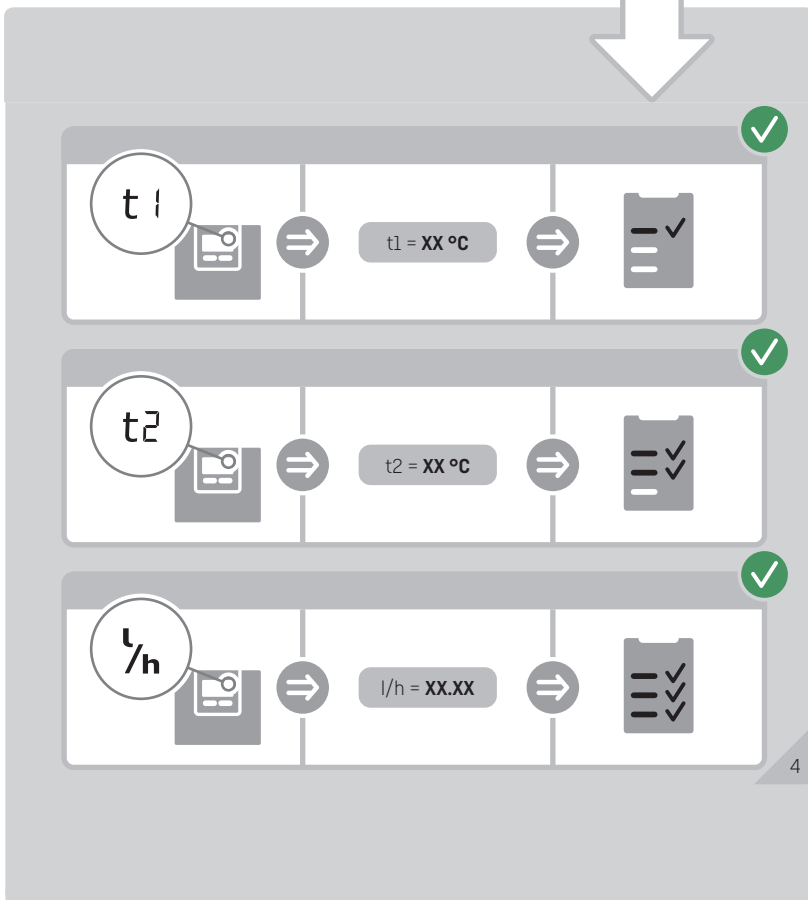
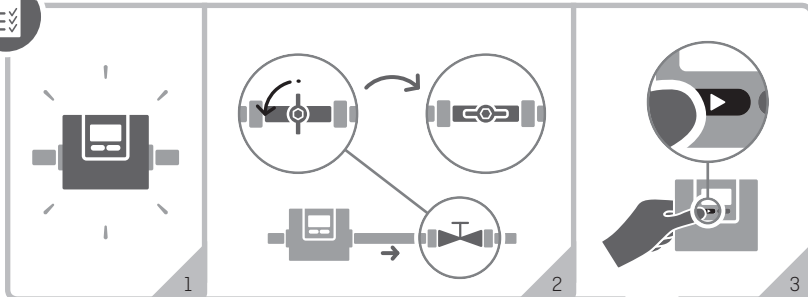


2



3







<https://www.kamstrup.com/en-en/heat-solutions/meters-devices/meters/multical-403> ✓



Data +	HC-003-10	✓
Data +	HC-003-11	✓
M-Bus +	HC-003-20	✓
M-Bus +	HC-003-21	✓
M-Bus +	HC-003-22	✓
linkIQ/wM-Bus +	HC-003-32	✓
linkIQ/wM-Bus +	HC-003-33	✓
wM-Bus+	HC-003-34	✓
Analog	HC-003-40	✓
PQT+	HC-003-43	✓
Radio +	HC-003-50	✓
Radio GDPR +	HC-003-51	✓
NB-IoT +	HC-003-56	✓
BACnet +	HC-003-66	✓
Modbus RTU +	HC-003-67	✓
BACnet IP +	HC-003-81	✓
Modbus +	HC-003-82	✓

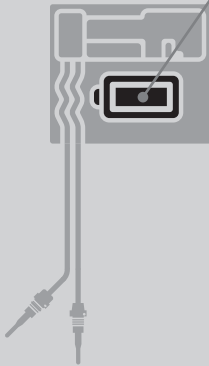
= In-A / In-B

= Out-C / Out-D

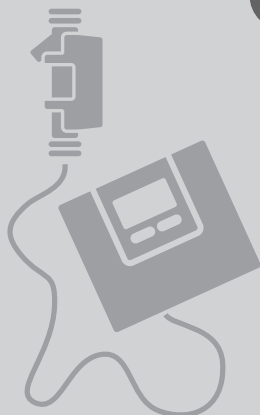
= Out 1 / Out 2



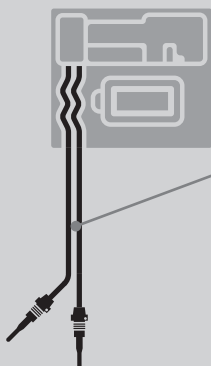
<https://www.kamstrup.com/en-en/heat-solutions/meters-devices/accessories>



1xD	HC-993-02	✓
230 VAC ⚡	HC-993-03	✓
24 VAC/VDC ⚡	HC-993-04	✓
1xC IoT	HC-993-06	✓
230 VAC	HC-993-07	✓
24 VAC	HC-993-08	✓
2xA	HC-993-09	✓



<https://www.kamstrup.com/en-en/heat-solutions/meters-devices/temperature-sensors>



- 2 x Pt500, DS, L = 1.5 m
- 2 x Pt500, DS, L = 3 m
- 2 x Pt500, PL, L = 1.5 m
- 4 x Pt500, PL, L = 3 m



The diagram illustrates the navigation of the meter's menu. A central hand icon with a magnifying glass is surrounded by a large rounded rectangle. Arrows point from this center to various data screens:

- Top Row:**
 - Screen A: VOL 0034732 m²
 - Screen kW: 157 kW
 - Screen L/h: 0.343 l/h
- Left Column:**
 - Screen b: EL 0014958 kWh
 - Screen 2: TA 0009089 MWh
 - Screen 3: TA 0005453 MWh
 - Screen 4: TA 0003635 MWh
 - Screen INFO: INFO 00000000
- Right Column:**
 - Screen t 12: t 12 39.38 °C
 - Screen t 2: t 2 27.14 °C
 - Screen t 1: t 1 66.52 °C
 - Screen h: h 0026280 h
 - Screen m³: VOL 0102906 m³
- Bottom Row:**
 - Screen 1: N° 123
 - Screen E1: E1 0046092 MWh
 - Screen E3: E3 0039350 MWh





MULTICAL® 403

