

flowIQ® 3200  
KWM3230







kamstrup.com



0.1 °C...70 °C

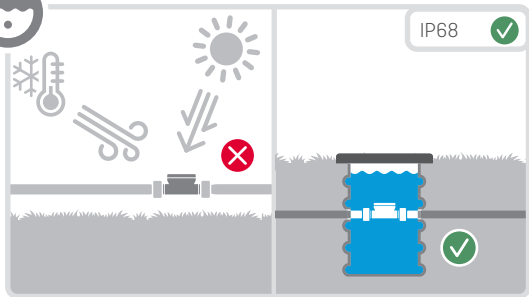
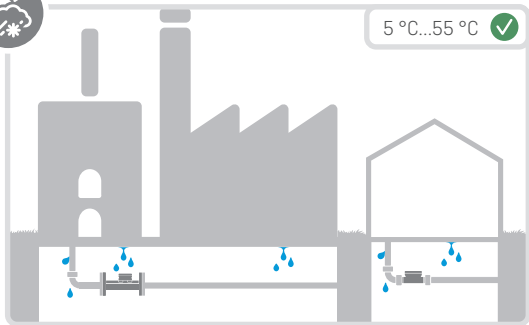


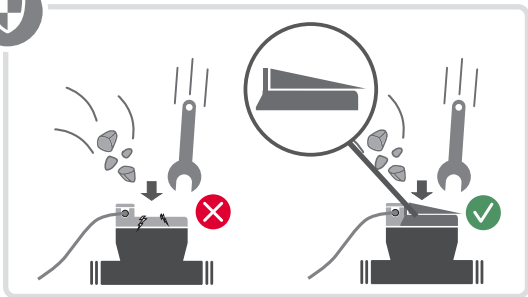
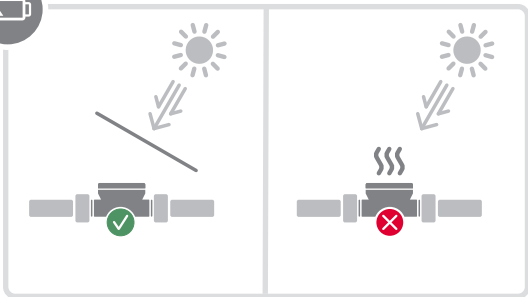
0.1 °C...50 °C

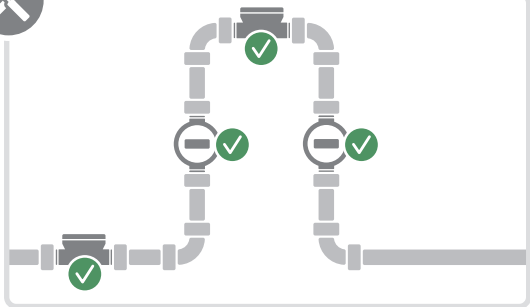


16 bar











Thread:  $\geq 1.4$  bar

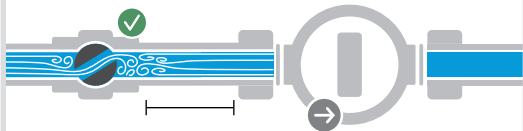
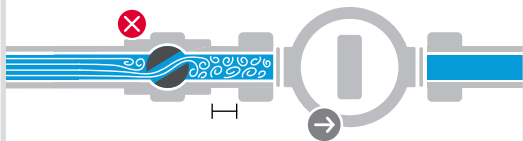
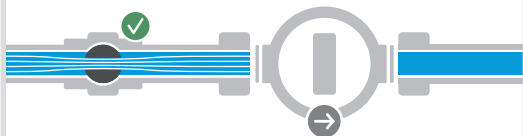
Flange:  $\geq 2$  bar

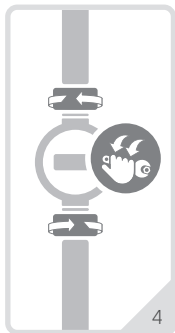
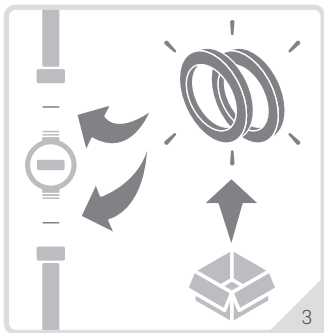
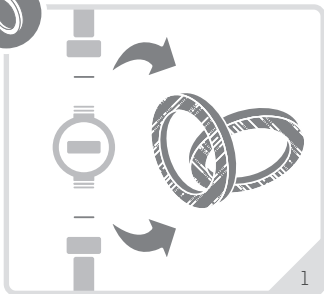


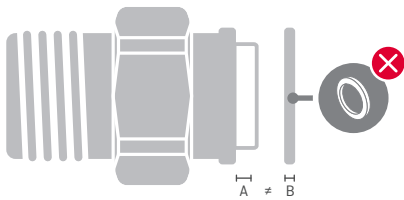
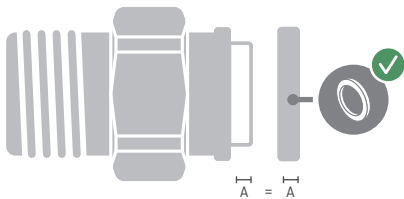
Thread:  $< 1.4$  bar

Flange:  $< 2$  bar



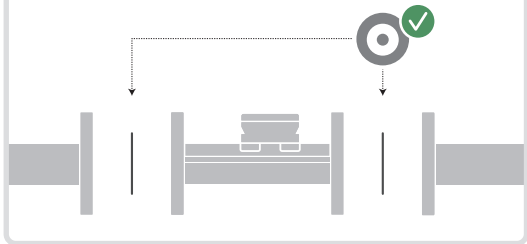








2.6

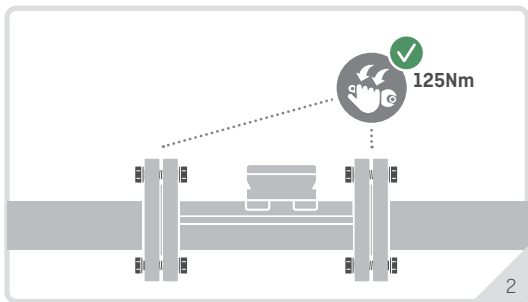
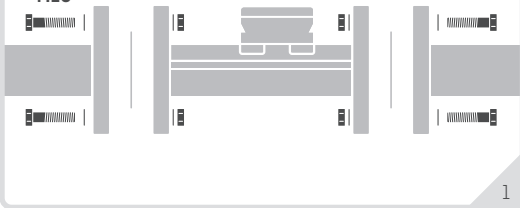


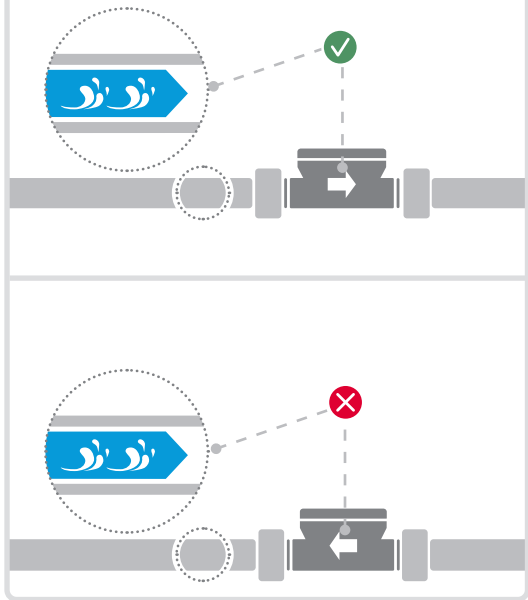


2.7



M16



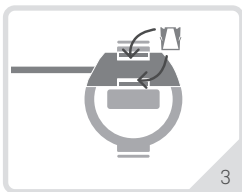




1



2



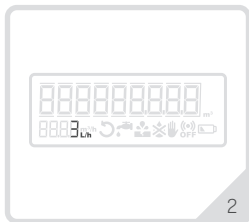
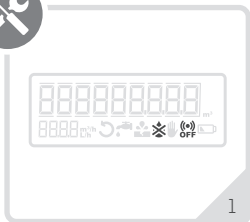
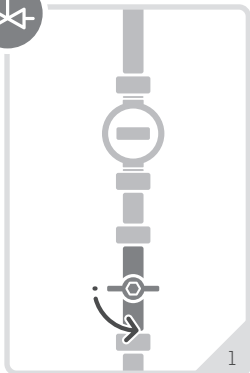
3



1



2









---

**Kamstrup A/S**

Industrivej 28, Stilling

DK-8660 Skanderborg

T: +45 89 93 10 00

[info@kamstrup.com](mailto:info@kamstrup.com)

[kamstrup.com](http://kamstrup.com)