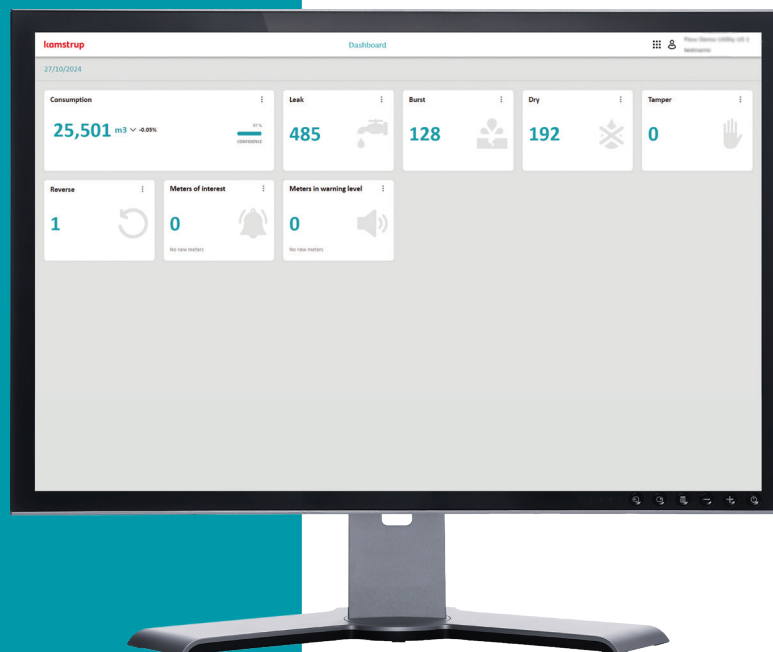


## Data sheet

### READY Manager and App

**Intuitive, scalable, cloud- and app-based single platform solution for reading and managing data from intelligent water meters**

- Powerful and flexible data integration and API support
- App with built-in meter installation tool
- Effective alarm management
- Near real-time notifications



## REAdy Manager: Easy to use and with a multitude of functionalities

REAdy Manager is Kamstrup's software solution for managing meter and radio data, network collectors, and intelligent alarm management and notifications as well as data reporting and integrations. The solution is highly intuitive and job execution centric, allowing the user to easily view and manage system occurrences from a top-down perspective, e.g., the at a glance dashboard displays alarm summaries making it possible to dive into actions from there. REAdy Manager is hosted regionally in a Microsoft Azure cloud setup with up-to-date rigorous security protection to keep your data safe.

### Highlighted features:

#### Data Management

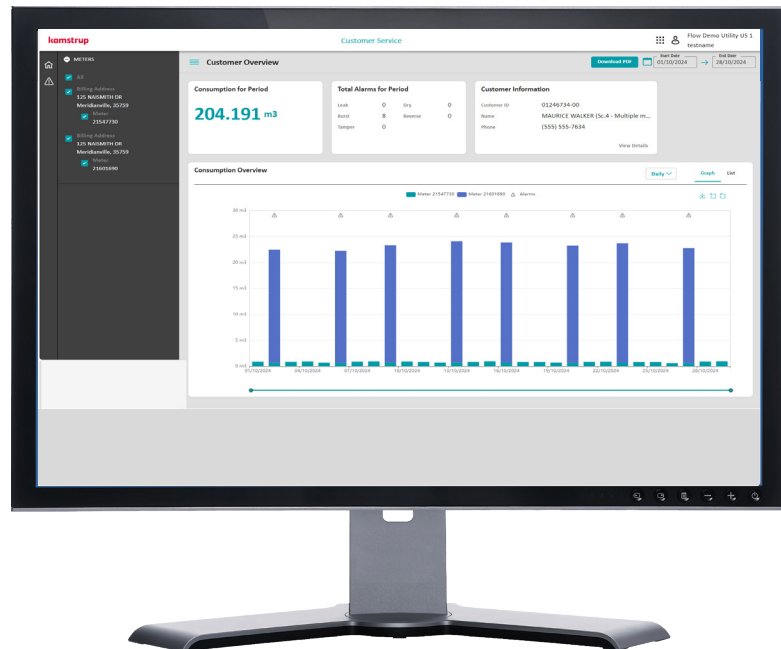
- Single software platform for Drive-by, Fixed network and NB-IoT data reading and alarm support
- High data security utilizing Kamstrup encryption keys for advance security with AES-128 bit encryption
- Alarm management for thresholds and normal vs. high priority alarms
- Data import and export functionality for customer integrations and data analysis
- Management of mobile route creation and Drive-by reads/alarms
- Network Collector management and notifications
- Alarm notifications via email or SMS

#### Data Integration

- Flexible user-defined import and export integrations with customizable CSV, fixed width, or API formats for billing or data analysis
- Automatic import and export functionality (scheduling)
- Possibility of receiving readings by email (predefined intervals)
- Advanced filtering
- API integration using REST and Webhook (SHA-256) via JSON (e.g. for consumption to do billing)

#### Data Visualization

- At a Glance Dashboard for a fast operational overview
- An optimized customer service module that facilitates the good consumer dialog
- Meter/Collector location on a map
- Automatic GIS coordinates based on addresses
- Alarms overview with flexible filtering options
- Display of logged data from meters
- Grouping of meters
- User defined custom columns and groups
- Analysis of users by high/low or no consumption



## READy Manager: Hardware and software requirements

---

### PC core components

Type	Minimum	Recommended
Processor	Intel Core I3 compatible processor (2.4 GHz)	Intel Core i5 compatible processor (Intel Core i5-6300U, 2.4 GHz or faster)
RAM	8 GB	16 GB

### System and connectivity requirements

Microsoft Windows 10 (64 bit) compatible device (e.g., PC). The device must be fully updated via Windows Update.

Internet access and open outgoing TCP/443 is required.

### Thinning of data

Data is stored only as long as required. By default, data that is collected via network and drive-by is automatically thinned according to the below procedure:

- All readings are saved at least 13 months
- After 13 months all readings are compressed to 1 reading per day
- After 10 years all readings are deleted

### Security

Kamstrup is ISAE3000 and ISO27001:2022 certified, and works in alignment to relevant aspects of CIS18 and the IEC62443 set of standards.

## REAdy App – mobile reading and installation tool

REAdy App is a mobile application that – together with a Bluetooth®-connected converter – changes your smartphone into an efficient installation, reading, data logging, and field tool. REAdy App is extremely intuitive and enables meter reading and data synchronization with the REAdy HES data management software easy.

The application supports meter installation, Drive-by meter reading (incl. Fixed network fallback reading), and exchange of meters. Additionally, it can be used together with a Bluetooth®- connected optical read-out head to read the data logger in the meter.

In reading mode, a map shows the geographical position of not yet read meters, making meter reading with REAdy App very simple and efficient. Visual and audible notifications guide the user on the progress of meter reading.

### REAdy App features

- Easy and intuitive user interface
- Map and list view of meters and routes
- Graphical display of logged data from meters
- Display of alarms
- In-field synchronization of data with REAdy Manager
- Verification of the signal strength from meters
- Configuration of network components.

### REAdy App recommended hardware

Supported smart phones	Supported tablets
Samsung Galaxy S23	Samsung Galaxy Tab S9
Samsung A Series A54	
HUAWEI P60	

Must be Android OS version 11.0 or newer to comply with security updates.

### Hardware

<b>Memory</b>	Minimum 8 GB
<b>Connection</b>	Wi-Fi, Bluetooth 5.0
<b>Display size and resolution</b>	Minimum 4.3" and 1024 x 768

In addition, some features require the following:

<b>Memory</b>	Minimum 12 MB
<b>Connection</b>	Wi-Fi, Bluetooth 2.1
<b>Display size and resolution</b>	Minimum 4.3" and 1024 x 768

- Mobile data access (SIM card) for using map view
- Integrated camera in smartphone (for easy pairing of PC software and smartphone app).

### Kamstrup A/S

Industrivej 28, Stilling  
 DK-8660 Skanderborg  
 T: +45 89 93 10 00  
 info@kamstrup.com  
 kamstrup.com

