

Kamstrup 351 Combi

Manual



Kamstrup

Kamstrup A/S
Industrivej 28, Stilling
DK-8660 Skanderborg
TEL: +45 89 93 10 00
FAX: +45 89 93 10 01
E-MAIL: info@kamstrup.com
WEB: www.kamstrup.com

Instructions manual

Connect the meter according to the diagram indicated on the meter front.

To change the display indication, push the button on the meter.

Safety- and installation tips

The meters are to be used exclusively for measuring electrical energy and must only be operated within the specified technical data.

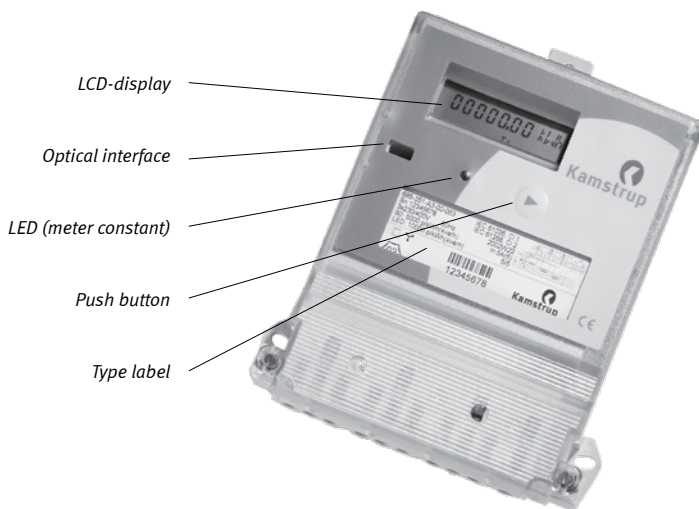
When installing or changing the meter, the conductor to which the meter is connected must be de-energized. Contact of parts under voltage is extremely dangerous.

Therefore the relevant back-up fuse is

to be removed and stored so that other people cannot insert this unnoticed.

The local standards, guide lines, regulations and instructions are to be obeyed. Only authorised personnel are permitted to install the electricity meters.

Meters for indirect connection are to be fused against short circuits with a back-up fuse $\leq 10A$.



Operation of the meter takes place via the mechanical button.

The meter constant LED flashes according to consumed energy.

The sealings may only be broken by authorized personnel!

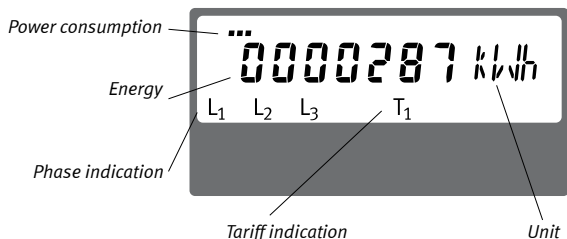
LCD display

The power consumption represent the amount of energy consumed and an increased consumption of energy gives an increased flash rate.

The phase indication signalizes the connection of mains for each individual phase.

The measuring unit is indicated in the unit area.

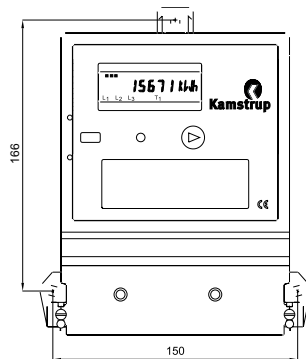
Tariff indicate the active tariff.



Terminals

Size: 2.5 – 10 mm²
 Tool: Ph2/6x1 mm
 Torque: 2.5 – 3 Nm

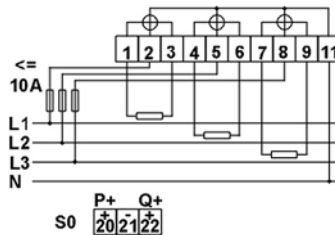
Mounting dimensions



Wiring diagrams

The valid wiring diagram is placed on the type label on the front of the meter.

3-phase, 4-wire



3-phase, 3-wire

