

Mount antenna with the included screws and plugs. See figure 8.

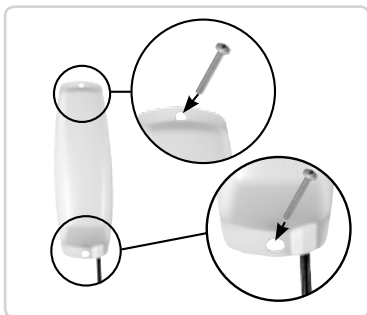


Figure 8

When placing the meter below the ground (A) (e.g. in a basement), make sure to place the antenna close to a window (B), outside the building (C) or on an upper floor (D). See figure 9.

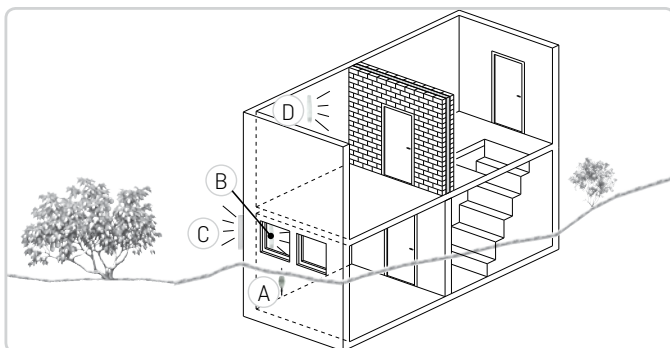


Figure 9

## 4 Cable guidelines

Make sure that you have the correct length of cable.

- Avoid mounting near electric cable
- Avoid tight bend or squeeze of the antenna cable
- Never install the antenna in a corner or near metal or metal pipes

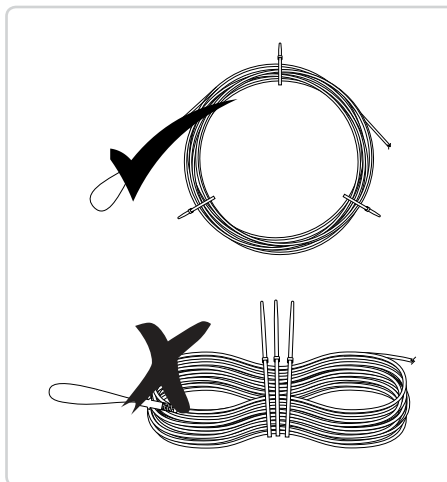


Figure 10

# kamstrup

### Kamstrup wall antenna with plug for flowIQ® 2250/3250

- 6699-490 [460-915 MHz]
- 6699-491 [460-915 MHz]

Kamstrup A/S · 5512216\_A2\_US\_07.2017



Kamstrup's external antenna is used to increase the radio range to ensure optimal data transfer.

Read this guide and follow a few guidelines as illustrated, and you will get the best benefit of your installation.

## 1 General information

This external antenna fits Kamstrup flowIQ® 2250 and flowIQ® 3250 water meters with antenna plug connections.

The antenna is for indoor or outdoor wall mount installation and comes in two versions:

- Antenna type: 6699490 comes with 2 m pre-mounted cable on antenna.
- Antenna type: 6699491 comes with 20 m cable. The cable is not mounted on the antenna. Therefore you can easily reduce the cable length to fit the installation.

Both antennas come with screws, plugs and seal housing no: 3026-891.

## 2 Antenna connection

Remove the Helix antenna if this is mounted.

Break the sealing housing with a small screwdriver, see figure 1.

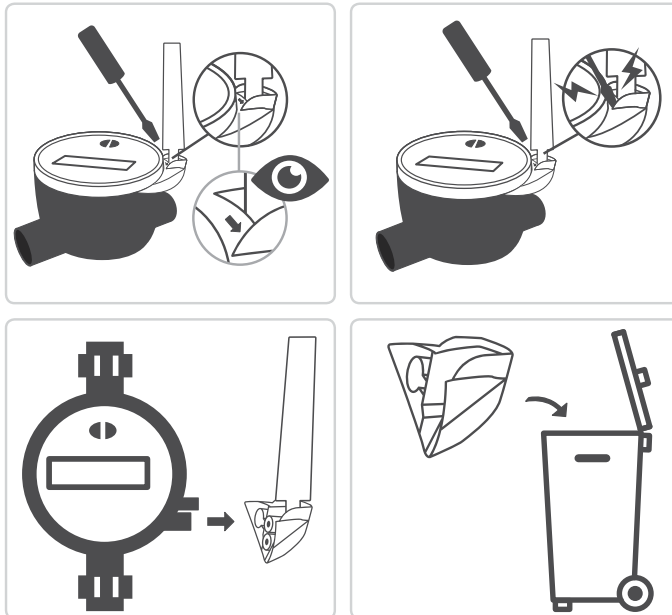


Figure 1

Connect the cable to the antenna plug connection, and press a new sealing housing on to lock the antenna cable, see figure 2.

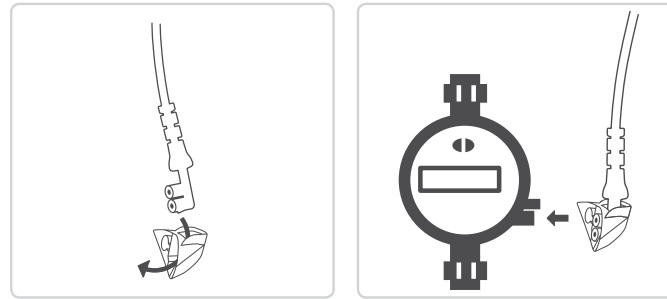


Figure 2

### Antenna type 6699491, 20 m cable

Cut the cable to the needed length and mount the cable on the antenna. Be sure to remove the excess shield, see figure 3.

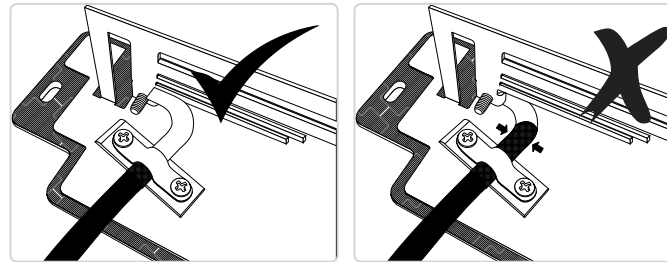


Figure 3

Note: Only use the needed cable length to increase signal strength. Cut and modify the antenna cover to fit the cable exit, see figure 4.

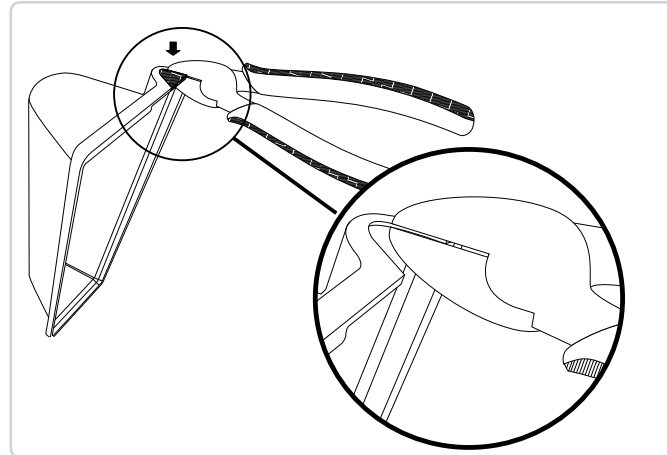


Figure 4

## 3 Mounting the antenna

The antenna can be installed indoors or outdoors.

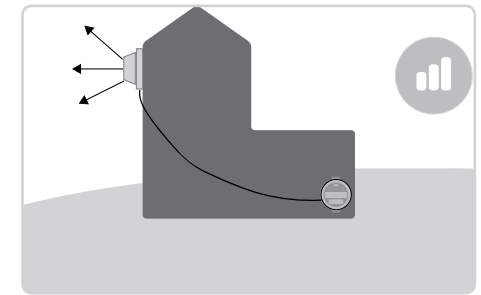


Figure 5

Outdoors is preferable, and mounted in the direction to the collector/receiver, see figure 5.

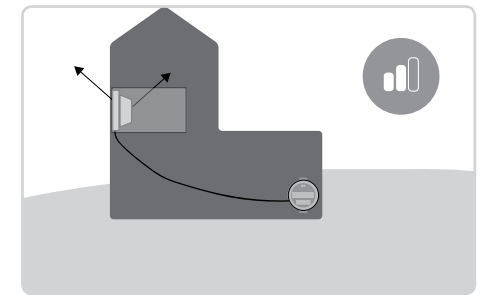


Figure 6

The antenna must be mounted in a vertical position as high as possible. If indoor installation is necessary it is preferable that the antenna be mounted adjacent to a window and above ground level, see figure 6. For the best signal placement, see figure 7.

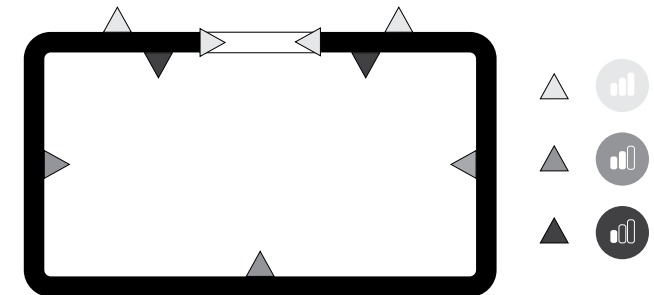


Figure 7