

READY

kamstrup



## Configure, manage and monitor your network remotely

- Receive automatic and reliable remote meter reading at very long ranges
- Transform raw data into actionable insights via the at-a-glance dashboard
- Enjoy data immediacy in a flexible, future-proof solution
- Protect and align your utility with a secure, best in class cloud based solution

# Simply log-in to collect & access meter data



The meters are read remotely and automatically by the utility's communication network



The readings are automatically available in the REAdy software



Simply log in to the REAdy software via desktop or mobile app to access meter data



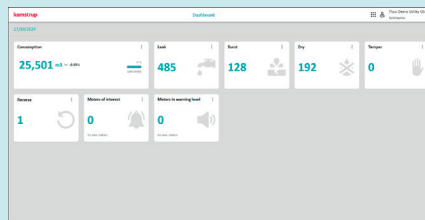
Use REAdy's mobile app to read meters from the street as a **fall-back option**.

## From raw data to actionable insights

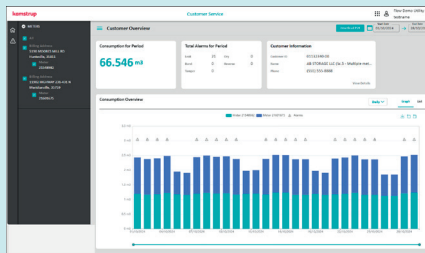
Collecting data is one thing. Converting raw data from smart meters into actionable insights related to KPIs is quite another.

Dashboard overview:

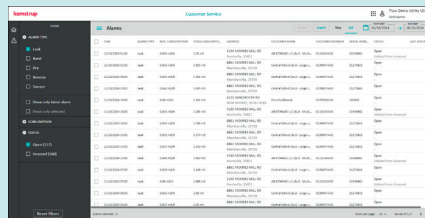
The **performance dashboard** displays key performance indicators in a quick access, actionable format.



The **customer service overview** that enables you to respond to inquiries with data and personal context.



The **alarm module** with active alarms in your system that enables you to investigate, prioritize and take action.



In addition, REAdy offers a multitude of other great features.

### System Security & Support:

- Best in class AMI support
- Cellular installation, configuration and support
- User management with roles and permissions
- API access

### User Experience & Accessibility:

- Intuitive, icon-based navigation
- Map visualization of meters and infrastructure
- REAdy mobile app for AMR reading, installation, logging and verification

### At or Near Real Time Data & Analytics:

- Analytics optimized with machine learning/artificial intelligence
- Automatic import and export
- Water loss analysis
- Meter exchange

### Incident Notifications:

- Consumption alerts
- Meter event notifications via text message or email
- Meter configuration of leak, burst and temperature thresholds over the air

**and much more...**