

Quick Guide Installation Steps

- Preconditions 1
- NOTE! Assemble meter and valve as a unit 2
- Install the unit in the installation 3
- Check the installation 4

Preconditions – Unpack the valve 1.1

Preconditions – Check list 1.2

- Meter
- Valve
- Gasket
- Coupler
- Spanner

NOTE! Assemble meter and valve as a unit 2

- Find the parts
- Mount the parts

1st: Mount the coupler on the meter 2.1

Install unit in installation 3

- Buckle clockwise
- Tighten max. 30 Nm

2nd: Insert the gasket in the coupler 2.2

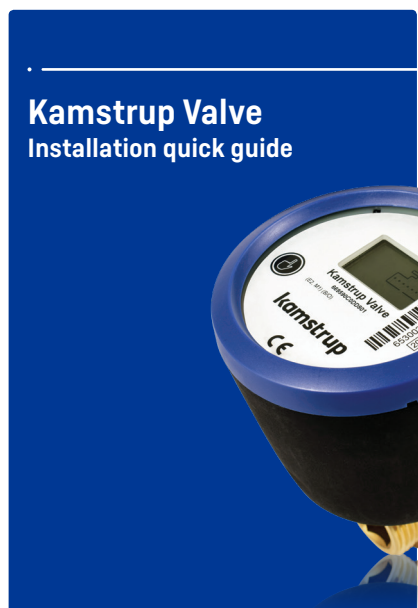
3rd: Mount the valve on the meter 2.3

- Buckle meter clockwise
- Tighten max. 30 Nm

Kamstrup A/S
 Industrivej 28, Stilling
 DK-8660 Skanderborg
 T: +45 89 93 10 00
 F: +45 89 93 10 01
 info@kamstrup.com
 kamstrup.com

Think forward

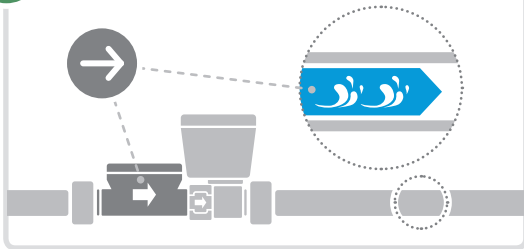
kamstrup



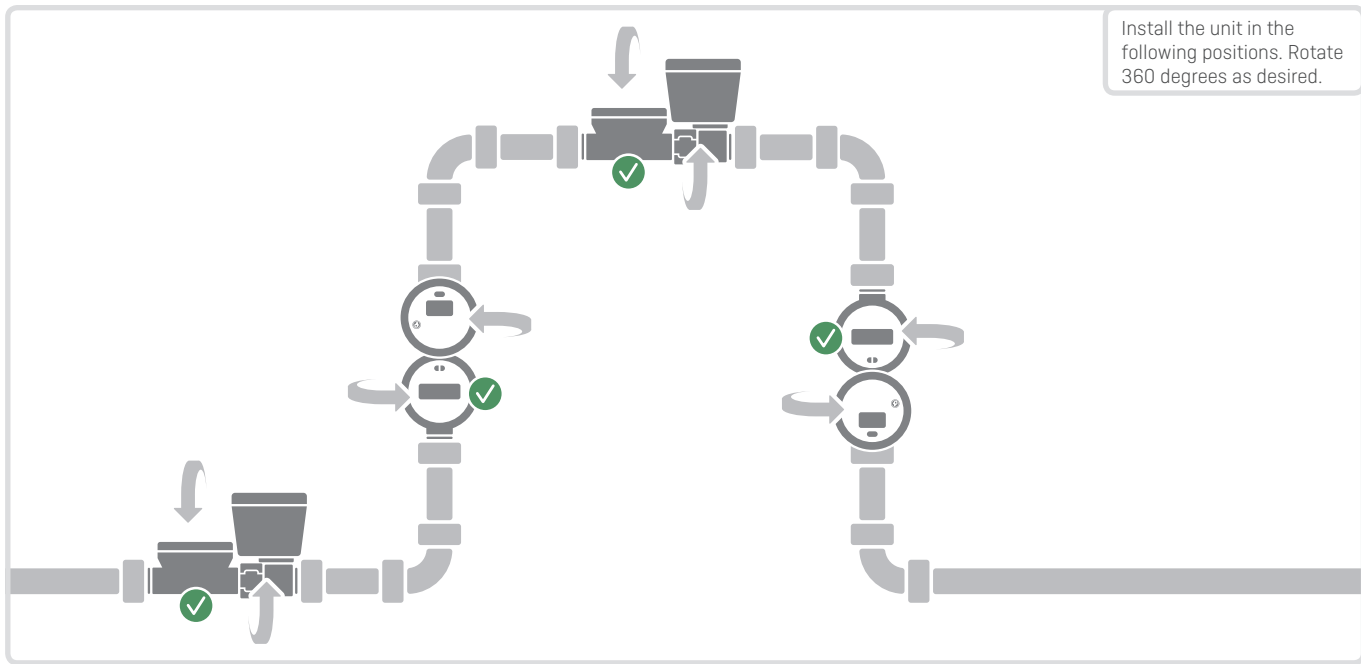
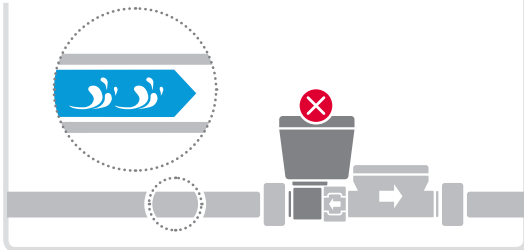
Kamstrup A/S - 55122215_A1_08_02.2018



Install according to flow direction



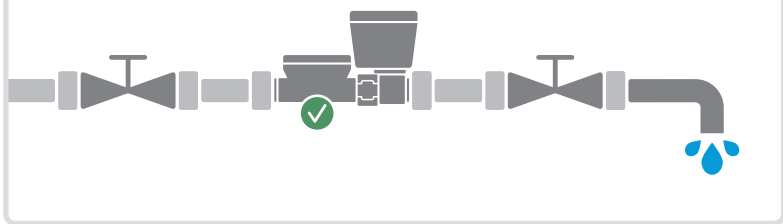
Do not install the valve in the inlet



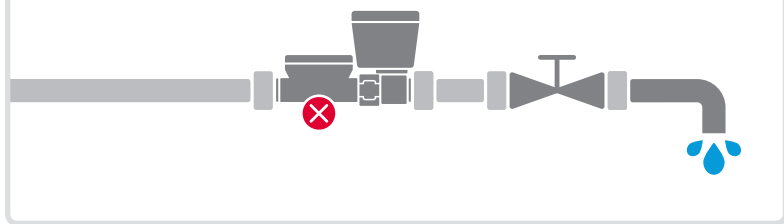
Install the unit in the following positions. Rotate 360 degrees as desired.



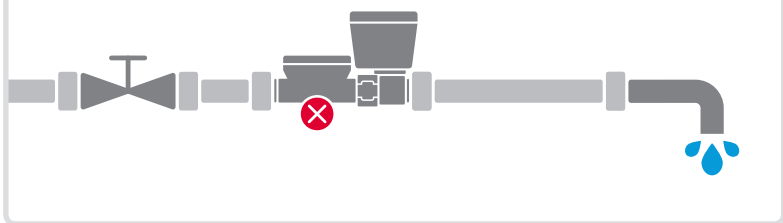
Correct placement in installation



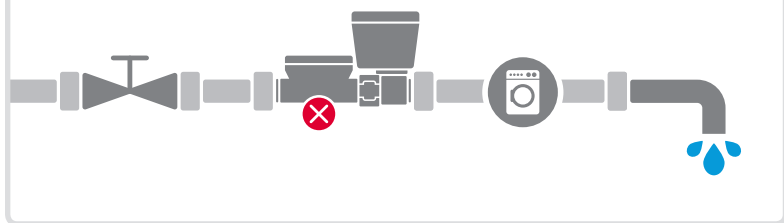
Wrong placement in installation



Wrong placement in installation



Wrong placement in installation



goo.gl/nUGsYV

Read more about the general directions regarding installation of Kamstrup water meters.

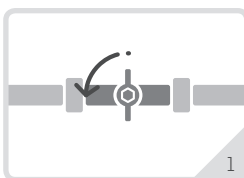
Use QR or URL above.



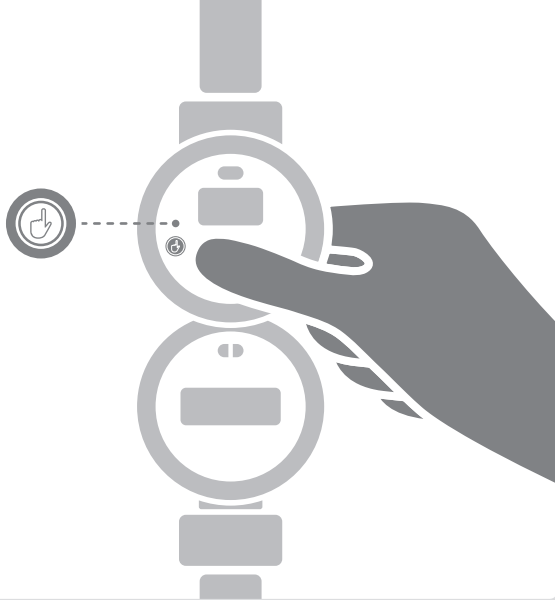
Installation is complete



Open for water supply



Push the button 3 times



Valve is closed



1

Valve is in process of opening



2

Valve is open



3