



Up & Running District Analyser

With Up & Running District Analyser, you get off to a better – and faster – start using the District Analyser module. We set everything up and make you familiar with the tool – and if you have questions, we have the answers. This gives you the best possible conditions to quickly achieve a high success rate managing your districts in a straightforward and efficient way.

Who is this for?

Up & Running District Analyser is for you who want a shorter learning curve and a helping hand creating the right foundation for being able to target your efforts with the District Analyser module. Fast.

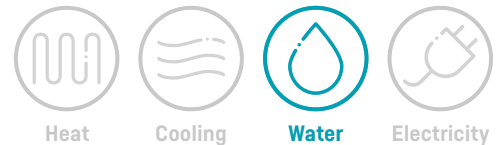
What is in it for you?

- **Less hassle**

We handle setup and configuration so that the District Analyser module is ready for you to use. In other words, you can skip the hassle and jump right in.

- **A good head start**

We give you a walk-through of the District Analyser module to make sure that you become familiar with the tool and have the right foundation to start following developments closely thanks to a complete overview of your distribution network split into districts.



kamstrup



What do you get?

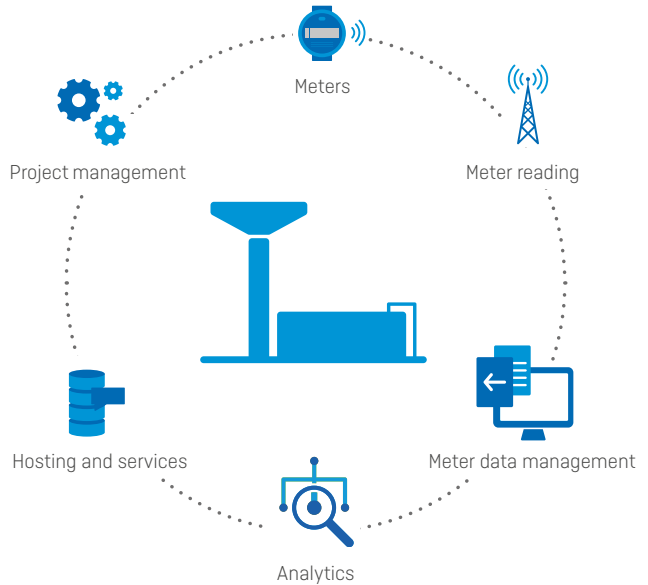
Setup and configuration

One of our product specialists takes care of the installation, setup and configuration of the District Analyser module via a remote connection. This includes providing access to the right users, activating your subscription as well as testing and verifying that everything works properly.

You get a full walk-through of your new tool to get familiar with its different features and user interface so that you are all set to manage your districts efficiently and target your efforts.

Should you need additional support, for example for the integration of your pipeline network into District Analyser to increase transparency, this can be acquired upon request.

Ask your Kamstrup contact for more information.



Looking for more?

With our add-on services, you can customise your Up & Running Service to give you just what you need.

These services include:

- **Training** in District Analyser
- **Pipeline Integration**
- **Setup** of districts
- **Adding** an additional third-party district meter
- ...and much more

Ask your Kamstrup contact for details.