

Installation manual

•

OMNIPOWER CT



Connect the meter in accordance with the installation diagram on the meter's type label.

Depending on the configuration, a fixed value is displayed, or the display changes between selected indications every 10 seconds.

It is possible to change the display reading manually by activating the left push button on the meter. The available readings depend on the meter's configuration.

Security and installation guidelines

The meter is only to be used for measuring electrical energy and shall operate within the specified values only.

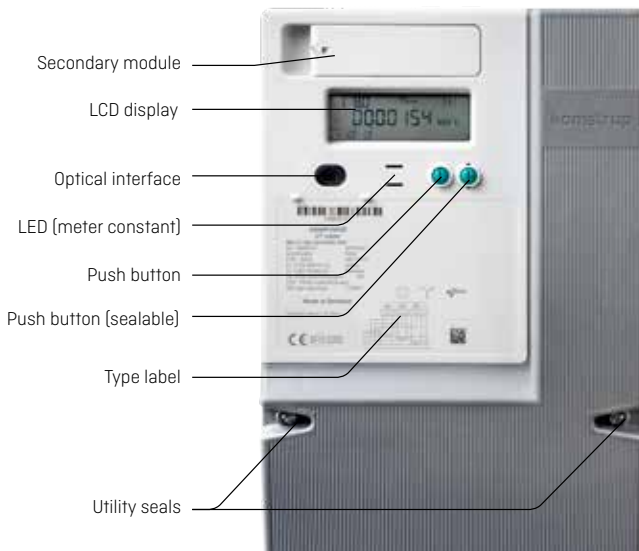
The meter must be disconnected when working on it. It can be highly dangerous to touch the meter parts when the meter is switched on.

Therefore, the relevant security fuse must be removed and kept in a place where it cannot be inserted by unauthorized persons.

Current local standards, guidelines, regulations and instructions must be observed. Only authorized personnel is permitted to install electricity meters.

Meters for indirect connection must be protected against short circuit by a security fuse in accordance with the maximum current stated on the meter.

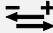
Failing to obey the "Guidelines for safety and installation", the guarantee no longer applies.



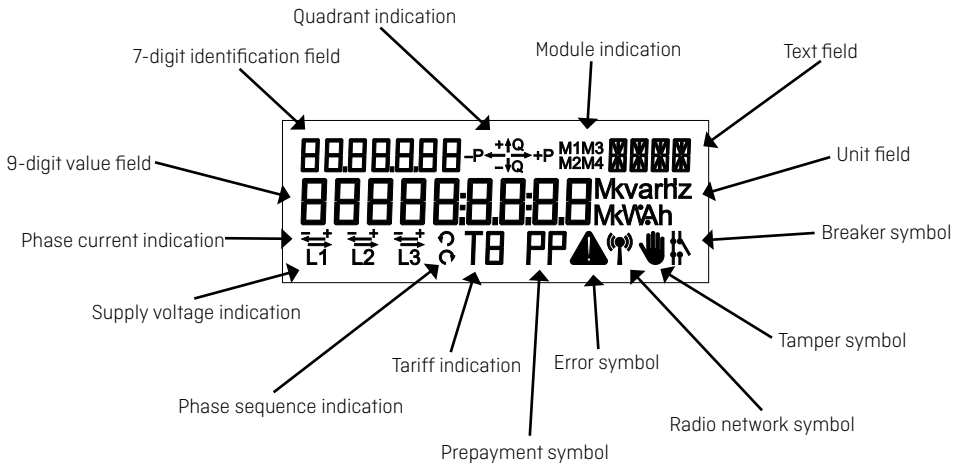
The meter constant LED blinks proportionally to the consumed active secondary energy. Only authorized personnel may break the utility sealing.

The phase current and the supply voltage indications indicate situations described below.

From the connection of the meter:

Indications L1, L2, L3		Indicate
On		Voltage is above minimum limit [160 V]
Off		Voltage is below minimum limit [160 V]
Indication		Indicate
On		Load is above minimum limit [0.6 W]
Off		Load is below minimum limit [0.6 W]

If the load exceeds the minimum limit and the meter is configured with this reading, consumption will be indicated via the quadrant reading. The direction of the three phase currents is indicated via the arrows above, respectively L1, L2 and L3.



Terminals

- Size: 2.5-10 mm² elevating connections
- Screw: Ph 2 / 4x1 mm
- Torch: 1.8 Nm +/- 10 %

With built-in radio

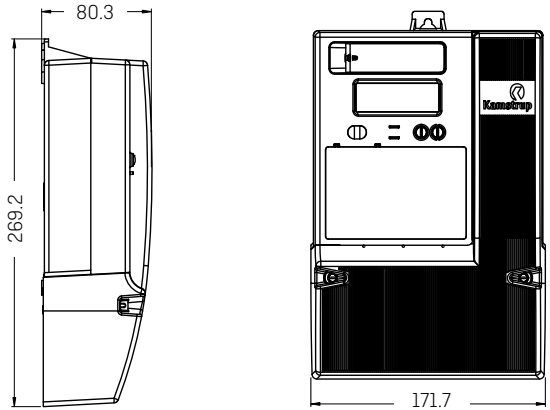
If the meter is supplied with integral radio for establishment of remote reading, the meter automatically connects to a radio network. The integral radio is equipped with an internal antenna. If the radio signal is not sufficient, an external antenna must be connected. Please see current documentation on available antennas.

Mounting a communication module in the meter may influence the radio communication. Please contact Kamstrup A/S.

Short-circuit connection

When a 3-phase meter is used for a 2-phase installation, it is recommended not to make a short-circuit connection between the meter's phase inputs 1 and 2 (i.e. between terminals 1 and 4 or between terminals 2 and 5).

Installation dimensions



Connection diagrams

The valid connection diagram appears from the type label.

