

This installation guide shows you the easy and simple installation of REAdy Gateway

Installation guide

REAdy Gateway

For SIEMENS MAG 8000

REAdy Gateway is a battery powered radio transmitter, capable of transferring the Modbus signal from a Siemens MAG 8000 watermeter to wireless M-Bus.

Kamstrup A/S • 55121755_B1_GB_02.2016

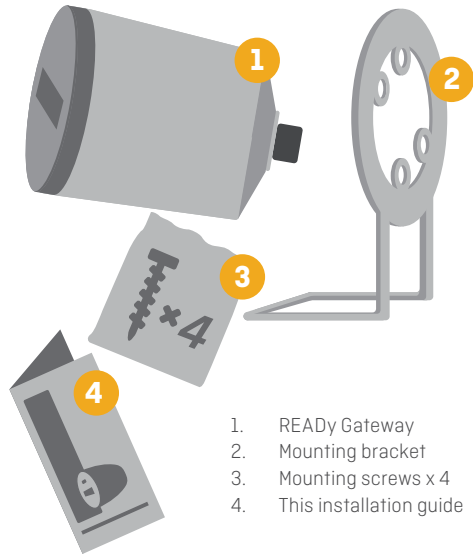
Kamstrup
kamstrup.com
info@kamstrup.com

Think forward



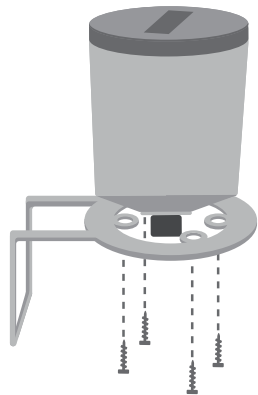
Kamstrup
kamstrup.com · info@kamstrup.com

What is in the box?



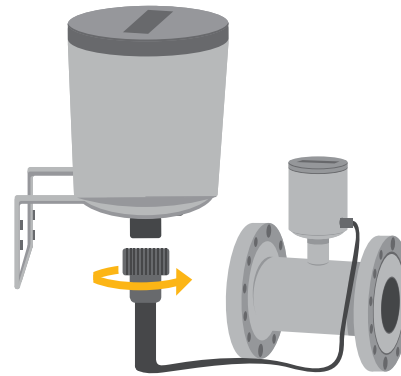
1. READY Gateway
2. Mounting bracket
3. Mounting screws x 4
4. This installation guide

1 Mounting



Mount the gateway on a wall or pipe with the supplied mounting bracket. Place the Gateway with the best possible reading conditions. If the Gateway is surrounded by metal or placed low in a well you should consider mounting an external antenna.

2 Connection



Connect READY Gateway to the SIEMENS MAG 8000 meter with the communication cable. Tighten the plug firmly to the READY Gateway. We recommend using a spray grease on the screw threads to secure the installation and stop the screw threads from growing together.

3 Check Connection



Check if the devices are correctly connected by looking at the display on the gateway.

The gateway displays two blinking dots, when connection is successful.

4 Test Connection

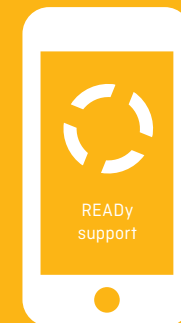


Test readability

If you have a READY Concentrator you can test if the gateway can be read on check.kamstrup.com by entering the serial number of your READY Gateway.

You can also test the readability with the installation tool in READY App, and a READY Converter.

Need help?



READY support
kamstrup.com/find-us

kamstrup