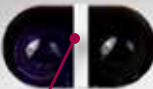


Ultrasonic

Water Meter



Custom label, logo or meter/serial number

Optical eye for reading and configuration

Expiry year of battery

Info codes

68506821

Bar code with serial number

'VERIFIC' is off under operation

One small square flashes when the meter is active

8888888888

FLOW LEAK BURST TAMPER Gal ft³ m³ A8
 VERIFIC. DRY REVERSE RADIO OFF



68506821

2030

Display shows water consumption

flowIQ® 3101

Type: 03U86C028UC
 S/N: 68506821/2014
 Con: 0100200023133
 PN16, PS16 – IP68

Temp.: 33°F... 120°F
 Qmax: 55 GPM
 SW: A1

Certification



Technical details

FCC ID: OUY-FLOW2100

Federal Communications Commission ID

USER GUIDE

Date:

Meter reading before change of meter:

flowIQ® 3101 is an electronic water meter with no moving parts. The meter requires no maintenance and can be remotely read by the water supply company.

The display shows the water consumption. Nine large figures indicate number of gallons or cubic feet. The last three figures may indicate decimals.

The info code 'FLOW' to the left is displayed if water is running through the meter. When the water is stagnant, the code is. At the bottom right of the display, one square flashes indicating that the meter is active.

A number of info codes at the bottom of the display indicate extraordinary water consumption conditions. An active info code in the form of one of the following words flashes: '**LEAK**', '**BURST**', '**DRY**', '**REVERSE**' or '**TAMPER**'. The codes have the following meanings:

Flashing Info code:	Meaning:
LEAK	During the latest 24 hours the water in the meter has not been stagnant for minimum one continuous hour. This could indicate an untight faucet or a running toilet cistern.
BURST	The water flow has exceeded a preprogrammed limit for minimum 30 minutes which indicates a pipe burst.
DRY	The meter is not water-filled.
REVERSE	The water flows in the wrong direction through the meter.
TAMPER	Attempted fraud or tampering. The meter is no longer valid for billing purposes.

The info codes 'LEAK', 'BURST', 'DRY' and 'REVERSE' switch off automatically when the conditions that activated them have been remedied. In other words, 'LEAK' disappears when the water has been stagnant for an hour, 'BURST' disappears when the consumption falls to normal level, 'REVERSE' disappears when the water flows in the right direction, and 'DRY' disappears when the meter is filled with water.

'TAMPER', however, remains ON if there has been a tampering attempt.