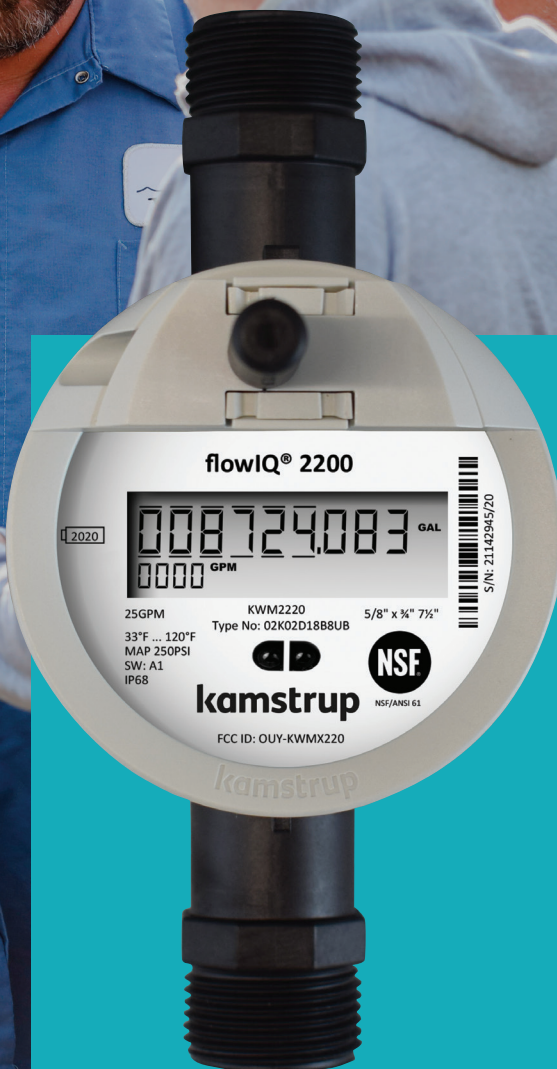


kamstrup



The Smarter Water Meter

Know your water. Know your network.

flowIQ® 2200

For residential applications.
Available in sizes 5/8" to 1".

Next-Gen Water Management

Meet the flowIQ® 2200, an advanced water meter designed for efficiency and accuracy. Its state-of-the-art low-flow detection capabilities ensure precision in billing and improve leak detection, making it a cost-effective solution to save water.

Additionally, the flowIQ® 2200 is equipped with embedded Acoustic Leak Detection (ALD) and non-revenue water analytics tools. These features convert your water distribution network into a data-driven system, allowing for swift problem identification and resolution. This innovative device gives you more control and insight into water consumption, providing a comprehensive solution for residential water metering.

Setting a new standard, the flowIQ® 2200 offers uncompromising accuracy, remote reading support, and intelligent features. It is hermetically sealed, providing IP68 protection against water ingress, and has a robust battery that lasts up to 20 years.

Start exploring the benefits of the flowIQ® 2200 for your water management needs today.

A Word from Our Customers

By 2019, we had about a million more dollars in revenue from the meters just registering the water that was going through the meter and was able to be billed to the customer.”

**– Mike Jones, General Manager,
Milcrofton Utility District, Tennessee**



Smart Metering Simplified

The flowIQ® 2200 offers:

Industry-Leading Reliability

With its IP68-rated hermetically sealed housing and patented ultrasonic measurement technology, the flowIQ® 2200 is engineered to maintain accuracy and performance for 20+ years, even in harsh conditions. It's a meter you can count on.

Embedded Acoustic Leak Detection (ALD)

The flowIQ® 2200 is the industry's only meter that listens for leaks. No sensors or external hardware are required. Kamstrup's ALD is embedded in the meter and can identify potential leaks in both service and main lines. The flowIQ® 2200's ALD capabilities may be activated anytime through a software-based upgrade without impacting the meter's battery life or warranty. This allows our customers to manage water loss on a timeline that meets their needs and budget.

Flexible Communications

The flowIQ® 2200 is available in RF (AMR/AMI) and Encoded Output options, enabling utilities to improve metering efficiency, capture near real-time data, make informed decisions and enhance customer satisfaction.

Easy Installation & Maintenance

The meter is compact, easy to install with flexible mounting options, and features an intuitive LCD interface. It can be mounted horizontally or vertically without any pipe-length restrictions. The meter also includes advanced diagnostics and self-checking functions to identify potential issues for proactive maintenance and minimal downtime.



The flowIQ® 2200 At a Glance

For detailed technical documentation, refer to the flowIQ® 2200 datasheet and documentation available at kamstrup.com.

Features	Applications	Sizes	Communications	Intelligent Alarms	Battery Lifetime
flowIQ® 2200	Potable Water Reclaimed	5/8", 3/4", 1"	RF (AMR/AMI) Encoded Output	Leak Burst Tamper Dry Reverse Flow Low Battery	Up to 20 years

Operating Characteristics

Meter Size Inches	Material Composite PPS	Material Stainless	Start Flow GPM L/h	Min Flow GPM L/h	Transition Flow ¹ GPM L/h	Max Flow GPM m3/h	Pressure Loss SMOC ² PSI bar	Connection on Meter Inches	Lay Length Inches mm
5/8" x 1/2"	✓		0.008 GPM 2	0.05 11.4	0.1 22.7	25 5.68	6.2 0.43	3/4"	7.5" 190
5/8" x 3/4"	✓		0.008 GPM 2	0.05 11.4	0.1 22.7	25 5.68	7.7 0.53	1"	7.5" 190
5/8" x 3/4"	✓		0.008 GPM 2	0.05 11.4	0.1 22.7	25 5.68	7.7 0.53	1"	5.1" 130
3/4"	✓		0.011 GPM 2.5	0.05 11.4	0.1 22.7	32 7.27	9.0 0.62	1"	7.5" / 9" 190 / 229
5/8" x 3/4"		✓	0.013 GPM 3	0.10 22.8	0.15 34.1	25 5.68	3.8 0.26	1"	7.5" 190
3/4"		✓	0.013 GPM 3	0.10 22.8	0.15 34.1	35 7.95	3.9 0.27	1"	7.5" 190
3/4"		✓	0.013 GPM 3	0.10 22.8	0.15 34.1	35 7.95	3.9 0.27	1"	9" 229
1"		✓	0.022 GPM 5	0.25 56.8	0.4 90.8	55 12.49	3.1 0.21	1.25"	10.75" 273

¹ At flows between "Start flow" and "Maximum flow," measurement occurs - however the accuracy is only guaranteed in the range from minimum flow to maximum flow.

² SMOC = Safety Maximum Operating Capacity [pressure].

KAMNA2200_040925

Take the next step in optimizing your water resource management.
Contact your Kamstrup distributor today at kamstrup.com/en-us/find-a-distributor.

kamstrup