



kamstrup

The Power of Insight

It all begins with listening.

flowIQ® 4200

For large commercial and industrial applications. Available in sizes 6" to 12".

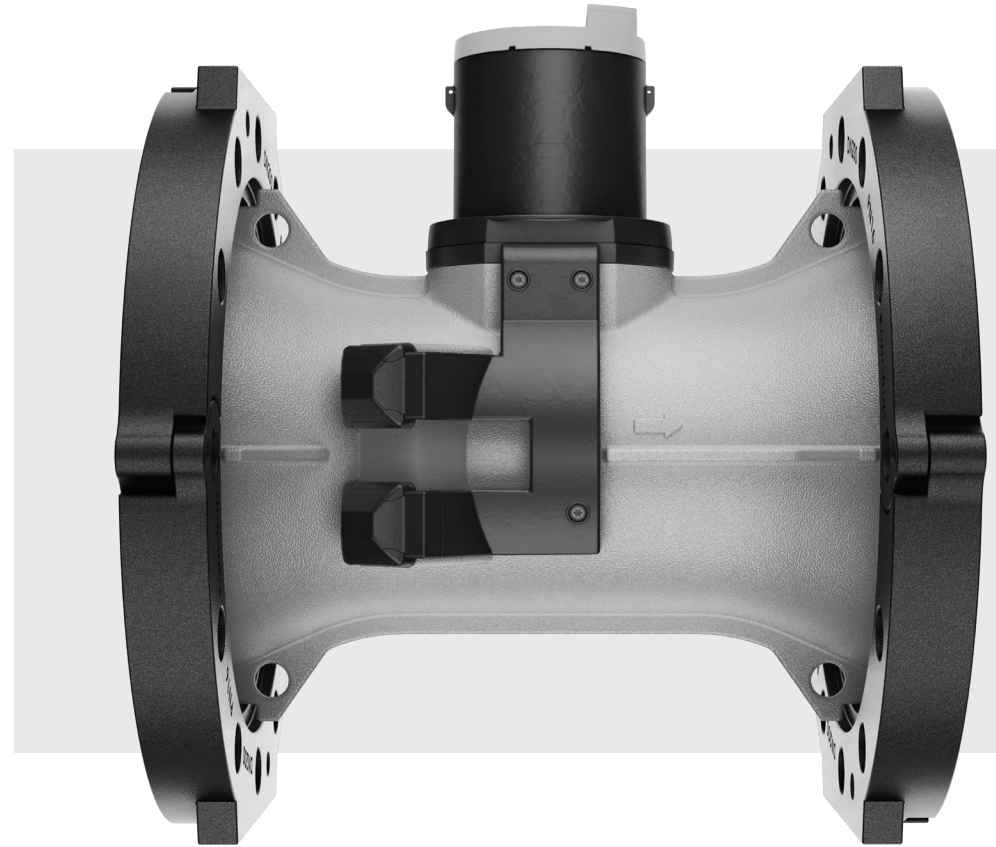
A New Era in Water Solutions

With nearly 80 years in metering, 30 in ultrasonic metering and 15 years in the water industry, Kamstrup understands the unique challenges of serving large-scale water customers. We know how fluctuating demand and ongoing maintenance can take a toll on an average meter, chipping away at its accuracy and negatively impacting operational productivity and revenue. Designed for commercial and industrial applications, the flowIQ® 4200 smart meter stands above the rest, offering an extended range and superior durability.

However, its most distinguishing feature is not merely its larger size but its engineering excellence—explicitly geared for large-scale applications. It's more than just a meter. It's an insightful window into the intricacies of your water system, laying the groundwork for reduced waste, increased revenue and greater peace of mind.

Ideal Uses:

- Municipal utilities monitoring large commercial/industrial customers
- Industrial plants with high-volume usage
- Large commercial properties like hotels, laundromats and golf courses



An aerial photograph of a campus featuring a prominent water tower. The tower has a white cylindrical body and a yellow top section with black text. The surrounding area includes green lawns, numerous trees, several large parking lots filled with cars, and various campus buildings. In the background, a city skyline is visible under a cloudy sky.

*IT'S TIME
TO KNOW*

1956 AAA 1989
1994 STATE 2003
CHAMPIONS

Let the Benefits Flow

The flowIQ® 4200 offers:

Maximum Return on Investment

The flowIQ® 4200 combines ultrasonic technology's non-degrading accuracy and enhanced low-flow measurement with a field-replaceable battery to increase water revenues while minimizing total cost-of-ownership, maximizing the return on investment for your water utility.

Sustained Accuracy

The flowIQ® 4200 utilizes ultrasonic technology to provide precise and reliable water flow measurements. It has a wide measuring range with outstanding low-flow measurement capabilities, ensuring trustworthy billing and detection of potential leaks or abnormalities in the water distribution network.

Integrated Smart Metering

The flowIQ® 4200 seamlessly integrates AMR/AMI data communications directly into the meter to enable "plug-and-play" remote reading, data analysis and near real-time monitoring while eliminating the potential points of failure of an external radio device.

The flowIQ® 4200 will be available soon in interoperable communication outputs, such as the UI-1203 Encoded Protocol, allowing the meter to be easily integrated into a third-party AMR/AMI ecosystem.



Easy Installation and Maintenance

The flowIQ® 4200 features a compact design, flexible mounting options and a user-friendly interface, simplifying the installation process for technicians. The meter may be mounted horizontally or vertically with no upstream/downstream pipe-length requirements. Additionally, the meter's advanced diagnostics and self-checking functions help identify potential issues or irregularities, enabling proactive maintenance and minimizing downtime.

Data Analysis and Insights

The flowIQ® 4200 features a consumption histogram that provides valuable insights into the water consumption patterns of a specific service connection. This can help water utilities better understand usage trends, peak demand periods and customer behavior. The data can be used to "right-size" service connections, forecast demand, plan resources, and implement targeted water conservation initiatives.

Field-Replaceable Battery

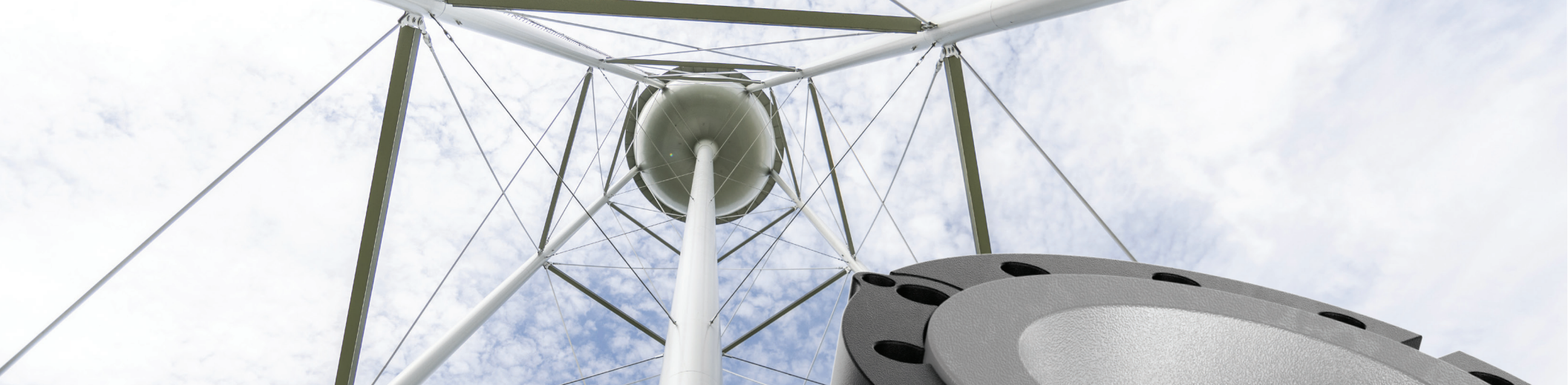
The battery in the flowIQ® 4200 is designed to last up to 20 years, depending on usage and configuration. This extended battery life, coupled with the fact that the battery can be replaced in the field, allows your utility to extend the meter's life without taking it out of service. This reduces service disruptions and significantly lowers your total cost of ownership.

See your water in a new way with the flowIQ® 4200.

Contact your Kamstrup distributor today.

For a list of Kamstrup distributors,
visit [kamstrup.com/en-us/find-a-distributor](https://www.kamstrup.com/en-us/find-a-distributor).





The flowIQ® 4200 At a Glance

For detailed technical documentation, refer to the flowIQ® 4200 datasheet and documentation available at kamstrup.com.

Features	flowIQ® 4200
Applications	Potable Water Fire Service
Sizes	6", 8", 10", 12"
Communications	Unlicensed RF (AMR) Licensed RF (AMI) Encoded Output
Intelligent Alarms	<ul style="list-style-type: none">• Tamper• Reverse Flow• Dry• Low Battery
Battery Lifetime	Up to 20 years field replaceable battery



Operating Characteristics

Meter Size	Start Flow	Min Flow	Transition Flow ¹	Max Flow	Pressure Loss SMOC ²	Connection on Meter	Lay Length ³	Split Flanges Weight	Total Weight
Inches	GPM L/h	GPM L/h	GPM m3/h	GPM m3/h	PSI bar	Inches	Inches mm	lbs kg	lbs kg
6"	1.4 318	2.8 635	5 1.136	1600 317.97	2.66 0.183	6"	11.8" 299.7	31 14.1	60 27.2
8"	1.7 386	4 908	7 1.59	2800 635.95	3.9 0.886	8"	13.8" 350.5	42 19.1	86 39.0
10"	2 454	5 1136	8 1.817	4500 1,022.06	4.2 0.954	10"	17.7" 450	64 29.0	134 60.8
12"	2.3 522	6 1363	10 2.271	5500 1,249.19	2.8 0.636	12"	19.7" 500	84 38.1	185 83.9

¹At flows between "Start flow" and "Maximum flow," measurement occurs - however the accuracy is only guaranteed in the range from minimum flow to maximum flow.

²SMOC = Safety Maximum Operating Capacity (pressure).

³Spool piece is available for 6" and 8" meters. Lay length 6" with spool piece = 18"/457 mm; lay length 8" with spool piece = 20"/508 mm.

Don't leave large-scale savings on the table.

Contact your Kamstrup distributor today at kamstrup.com/en-us/find-a-distributor.





Kamstrup is a leading supplier of intelligent metering solutions and services. We help utilities all over the world reduce waste and optimize their production and distribution of clean water and energy; and we enable sustainable management of buildings. For more than 75 years Kamstrup has been dedicated to delivering actionable insights to water and energy professionals, because we believe better data enables better decisions.

Our solutions—including meters, remote reading systems, software, and services—are sold in more than 90 countries.

KAMNA4200_102924

kamstrup

Kamstrup Water Metering, LLC

2855 Forsyth Commerce Way

Building 200

Cumming, GA 30040

kamstrup.com